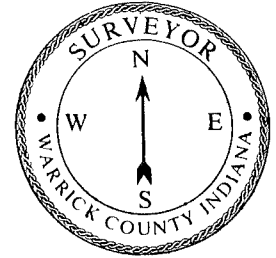


CORNER RECORD
WARRICK COUNTY



DESCRIPTION:

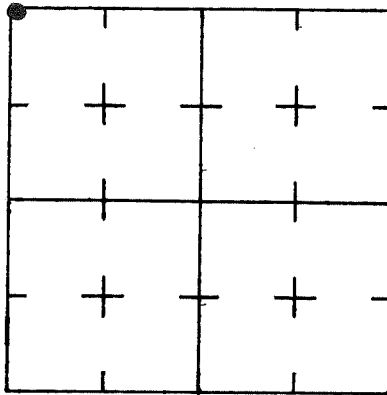
NW CORNER NW/4 NW/4

SECTION 1, T. 4 S. R. 7 W.

2nd PRINCIPLE MERIDIAN

WARRICK COUNTY SURVEYOR
MICHAEL IRVIN

INDICATE CORNER REFERENCED



DESCRIBE CORNER REFERENCED

P. KNAIL
↓

STATE PLANE COORDINATE DATA

INDIANA ZONE: WEST

X _____

Y _____

ESTABLISHED BY:

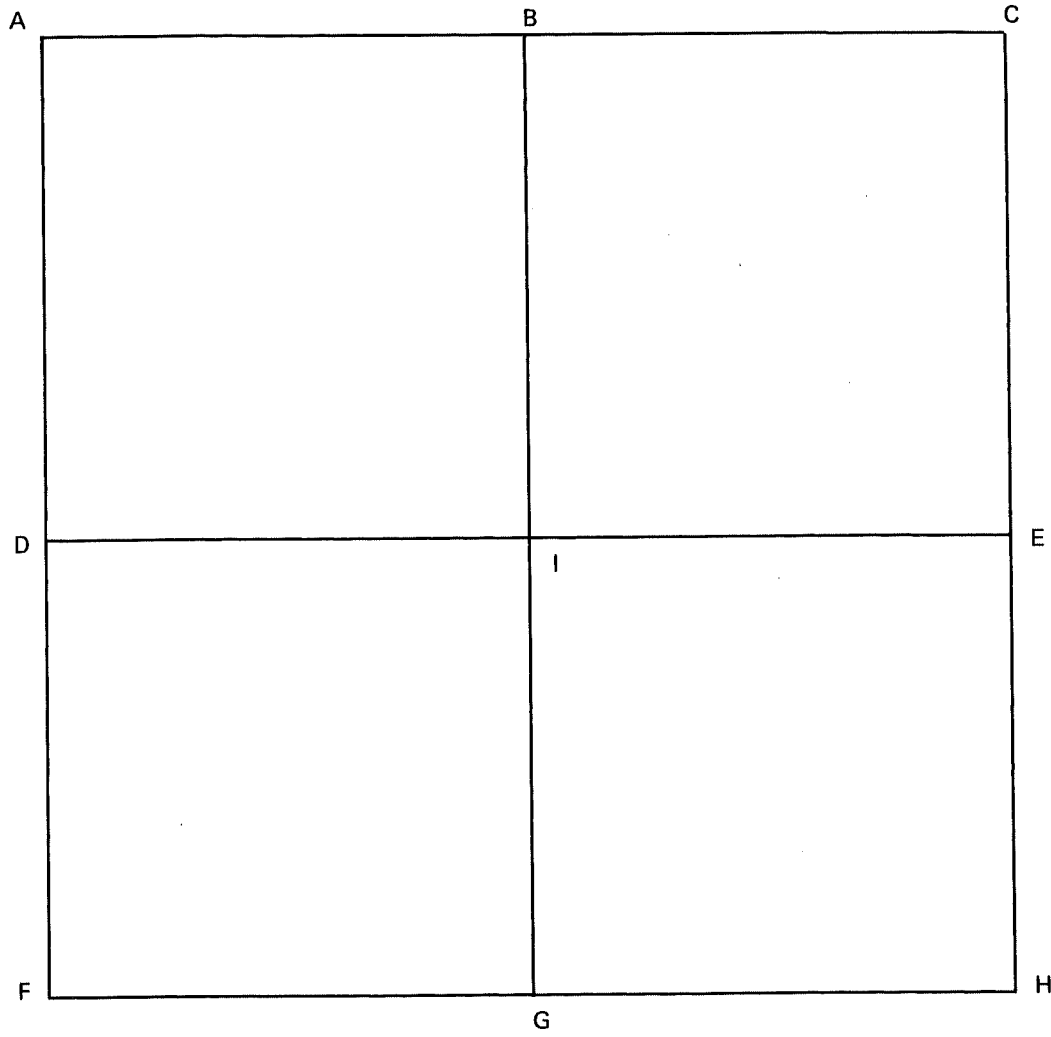
APPROVED BY

DATE

REFERENCED BY:

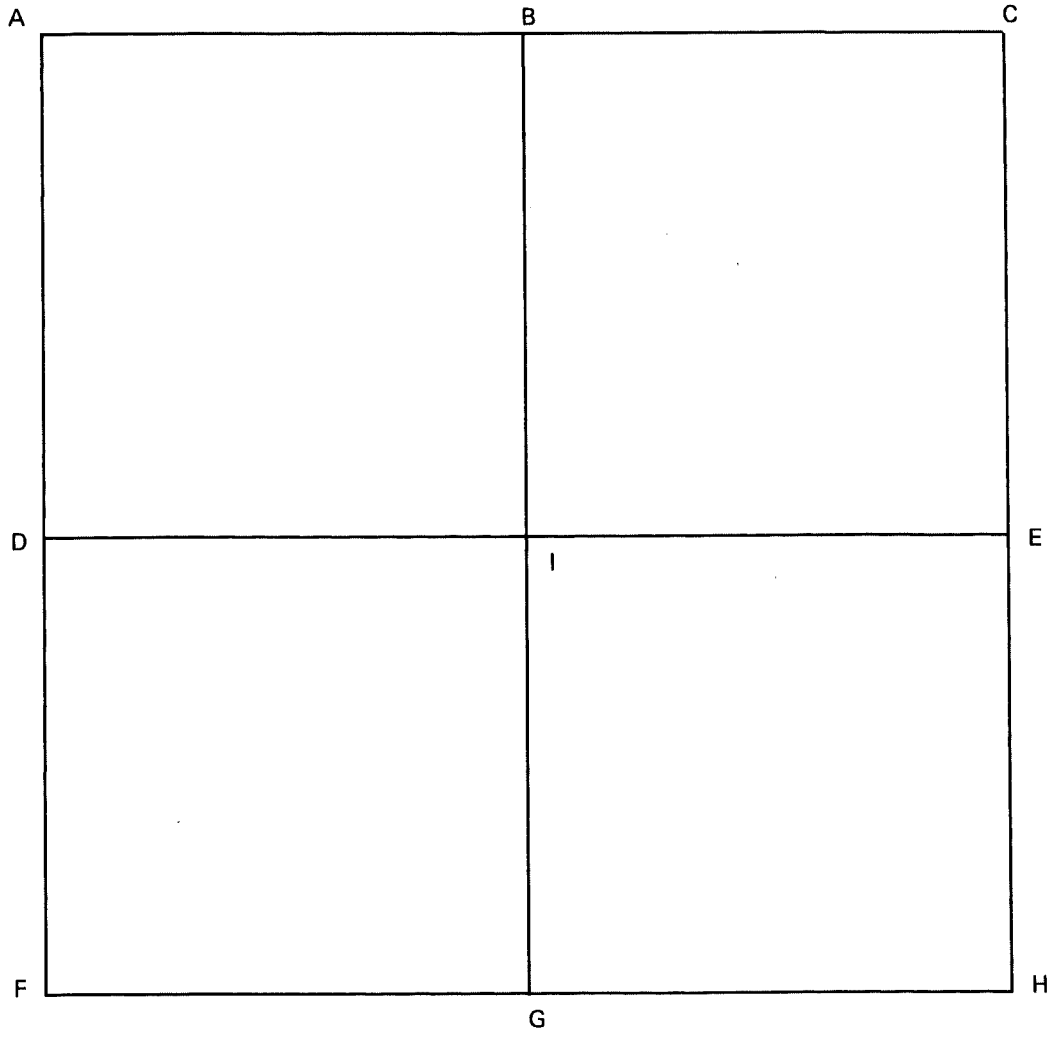
DATE

CORNER CODE SYSTEM
Warrick County



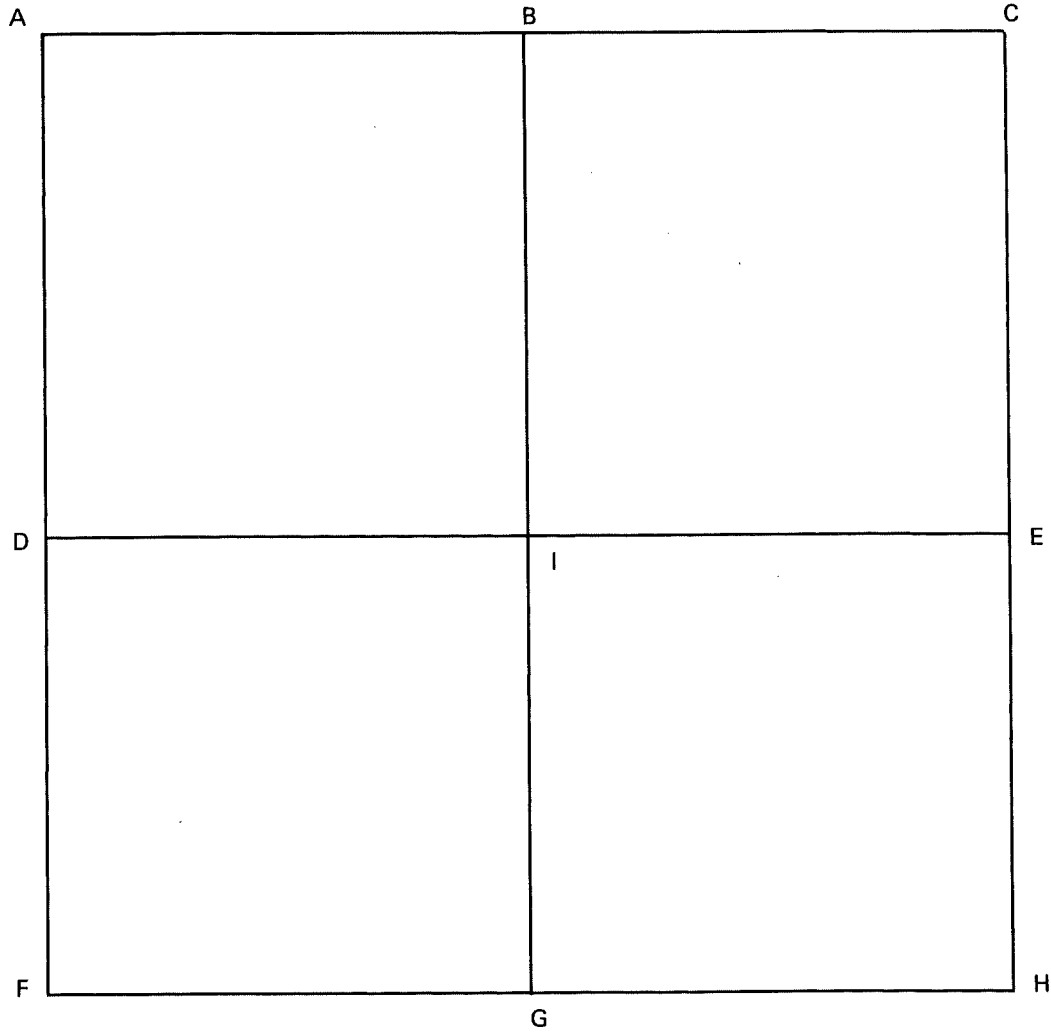
NOTES

CORNER CODE SYSTEM
Warrick County



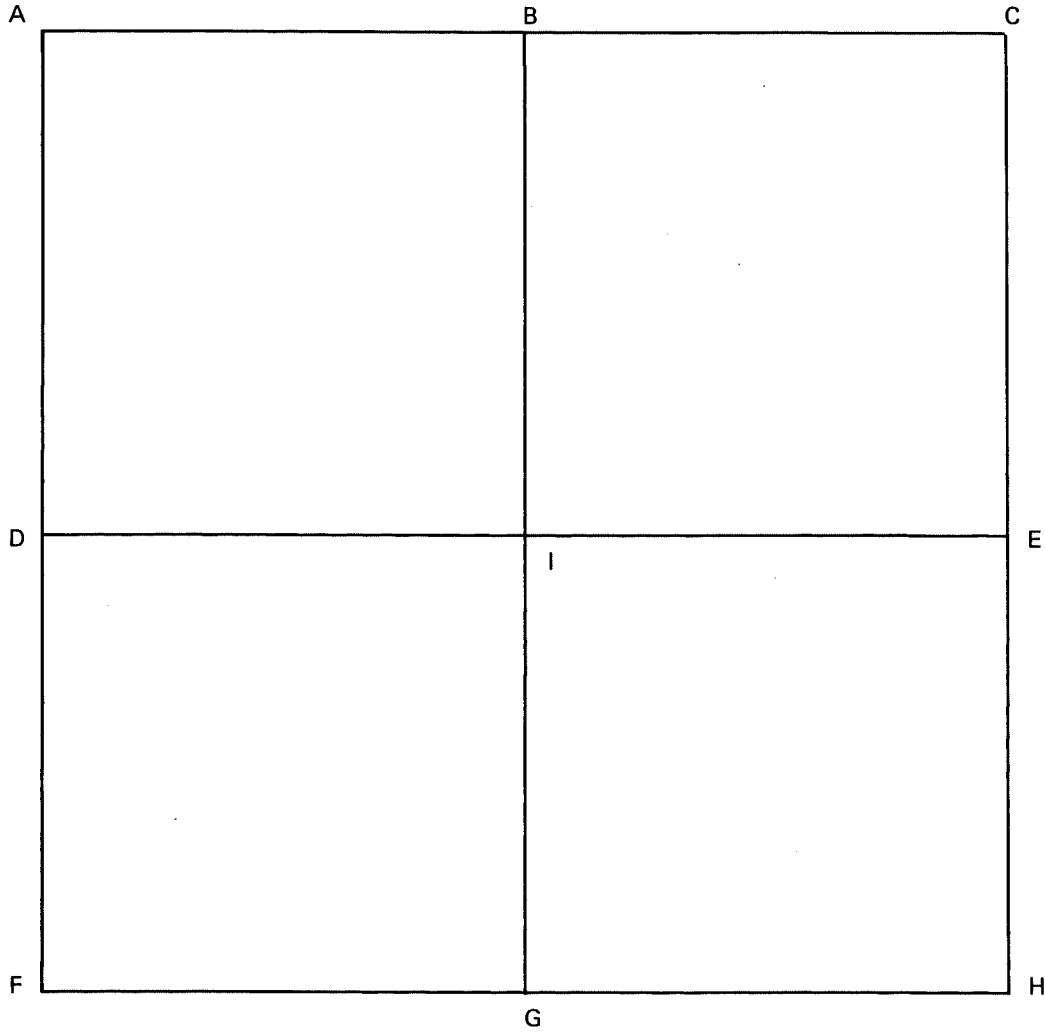
NOTES

CORNER CODE SYSTEM
Warrick County



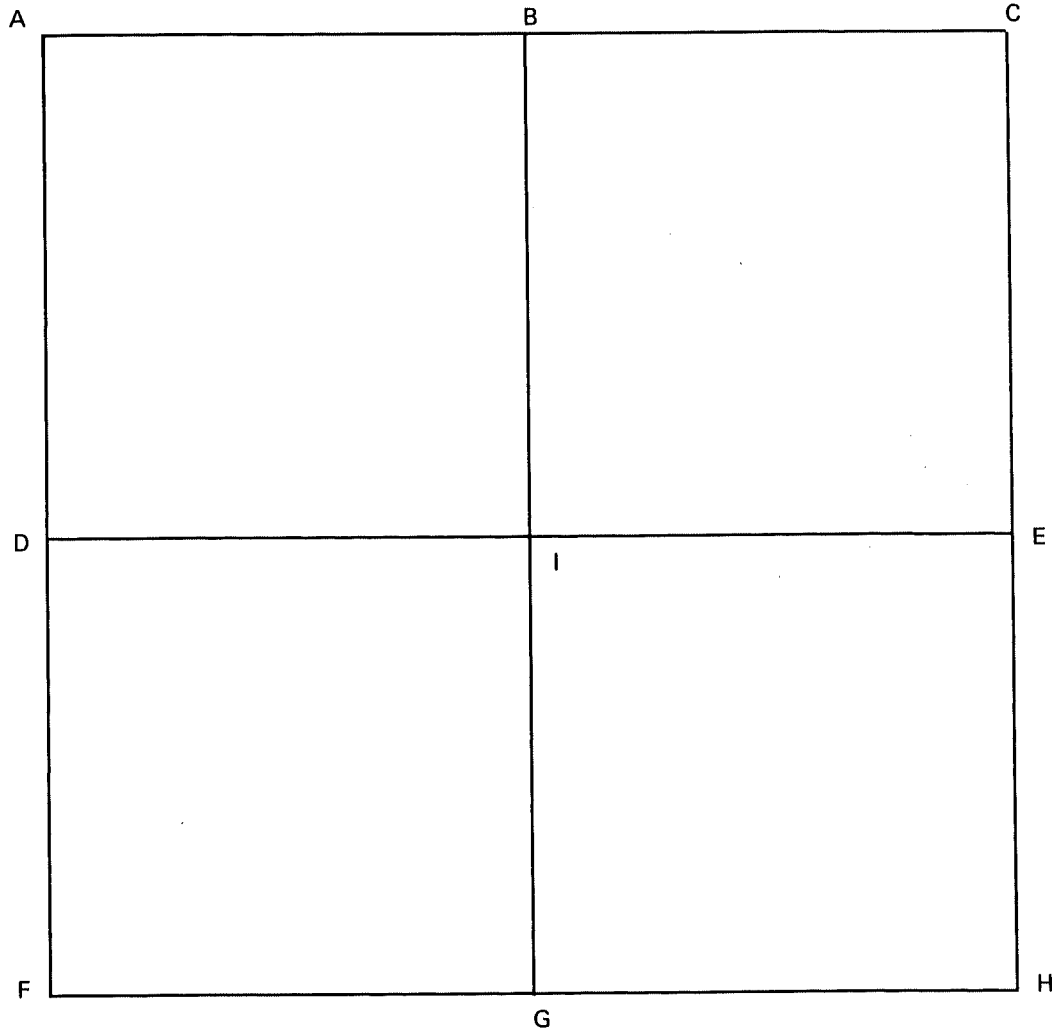
NOTES

CORNER CODE SYSTEM
Warrick County



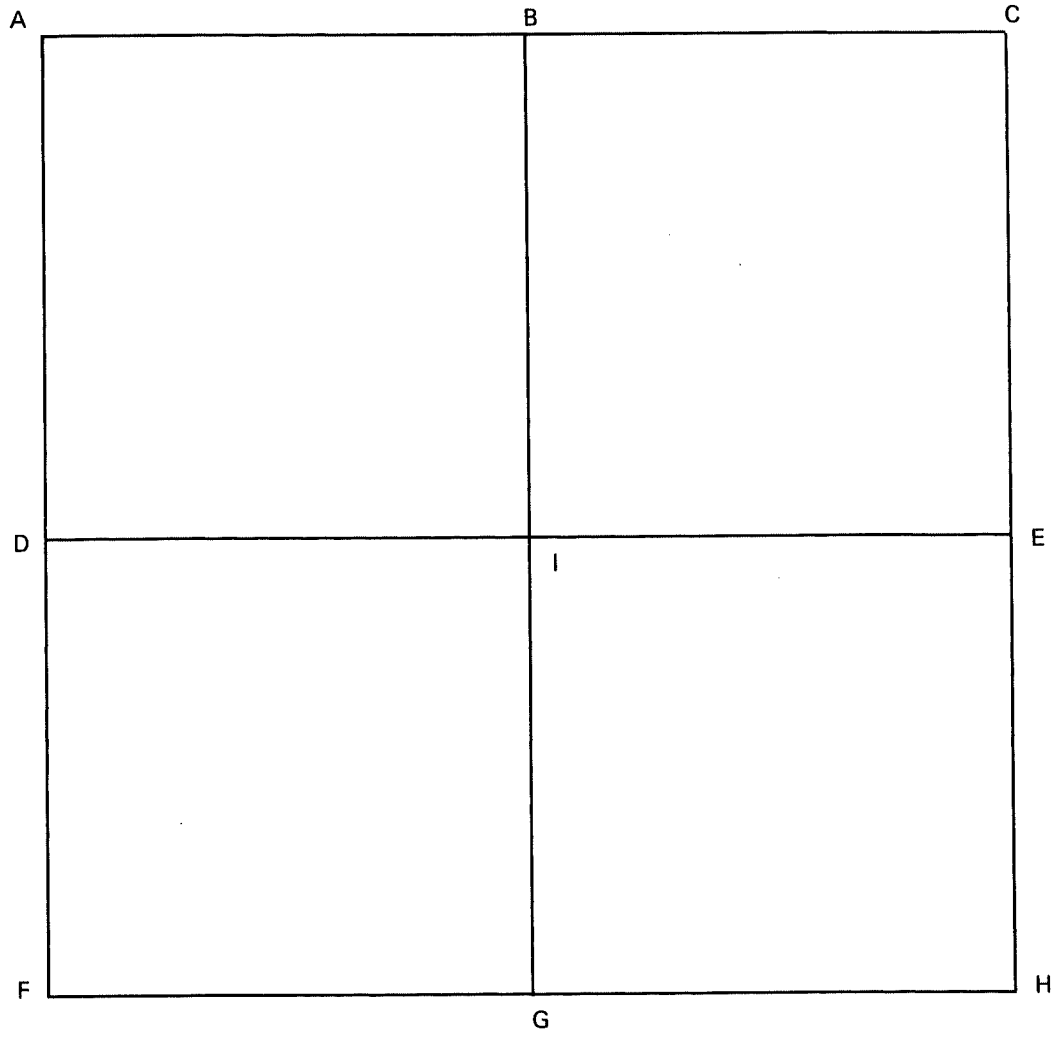
NOTES

CORNER CODE SYSTEM
Warrick County



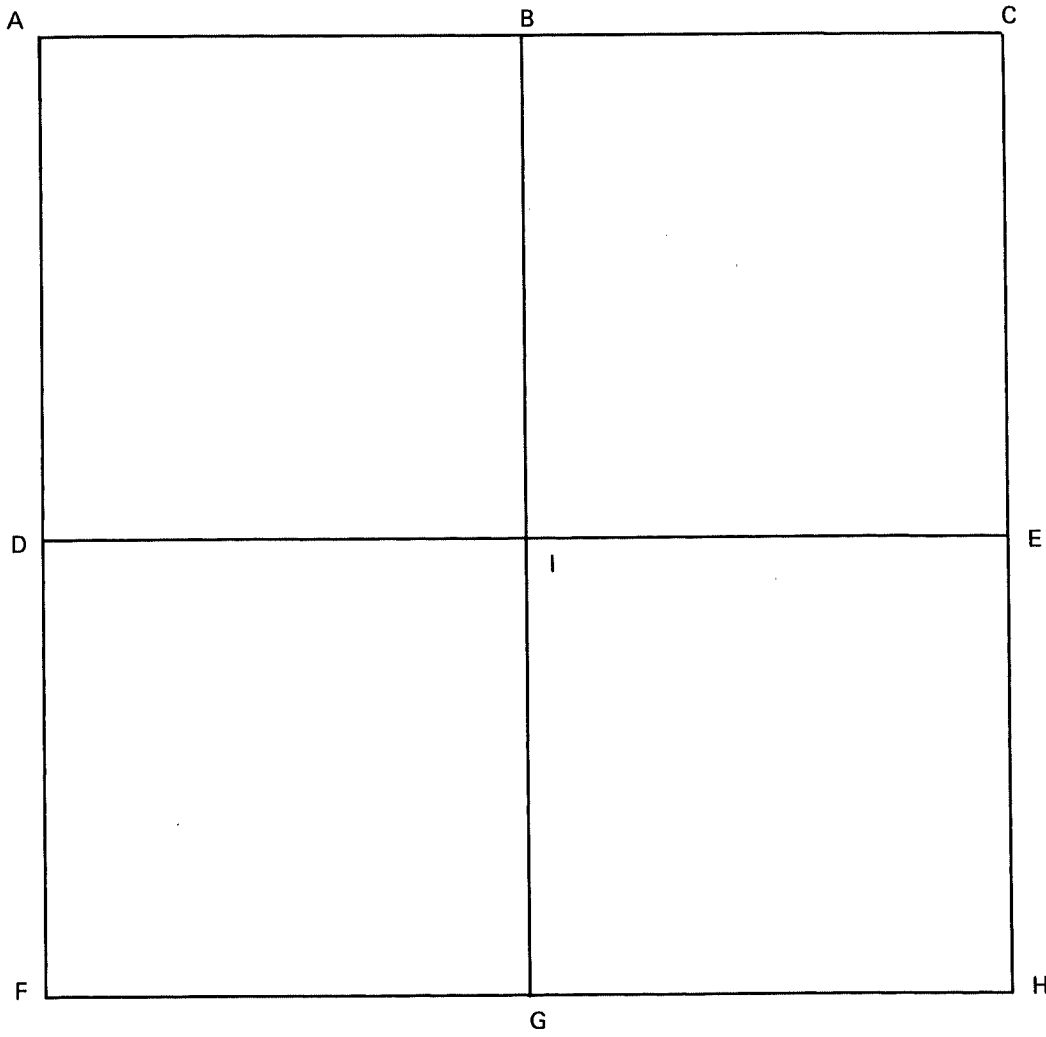
NOTES

CORNER CODE SYSTEM
Warrick County



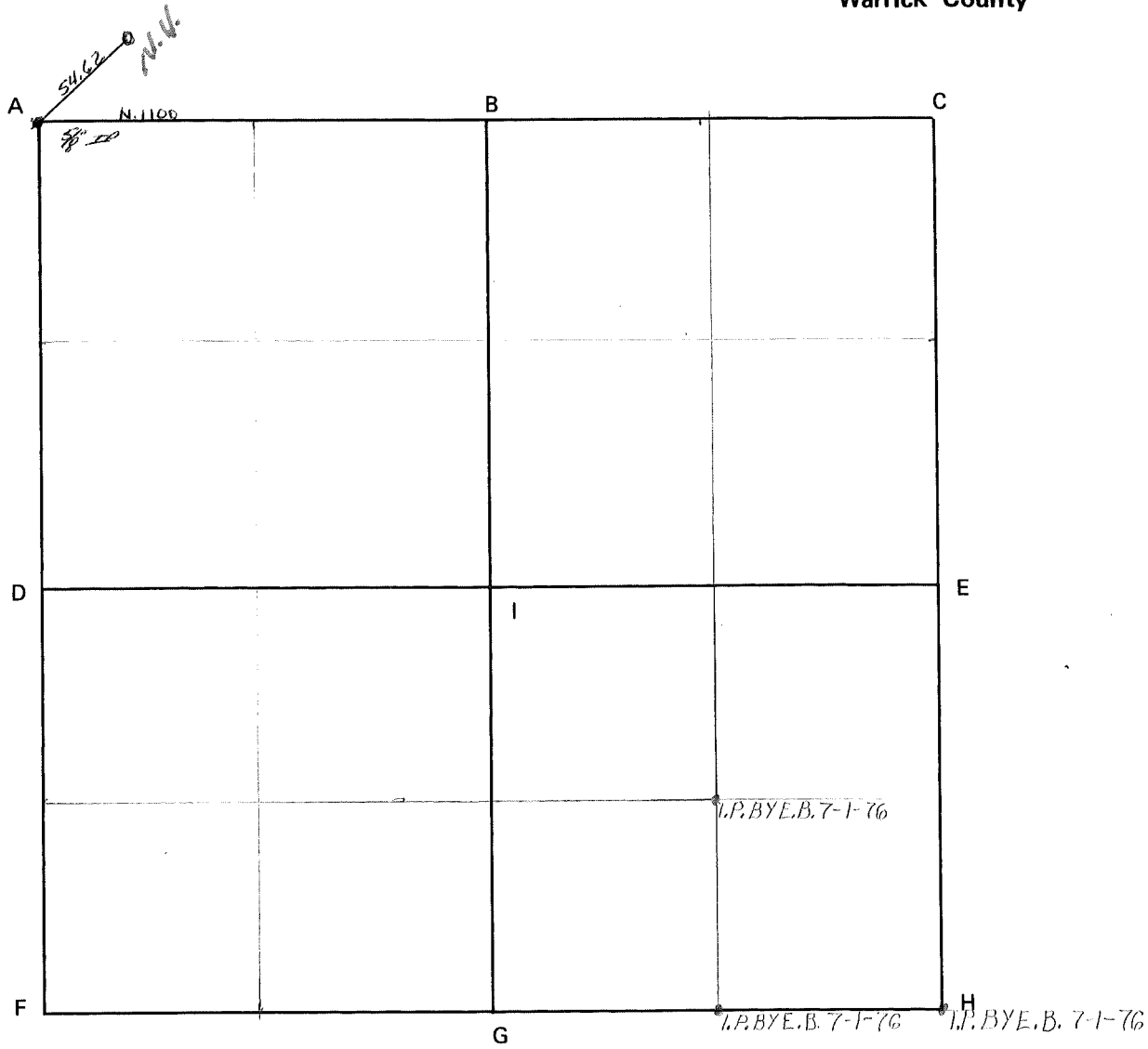
NOTES

CORNER CODE SYSTEM
Warrick County



NOTES

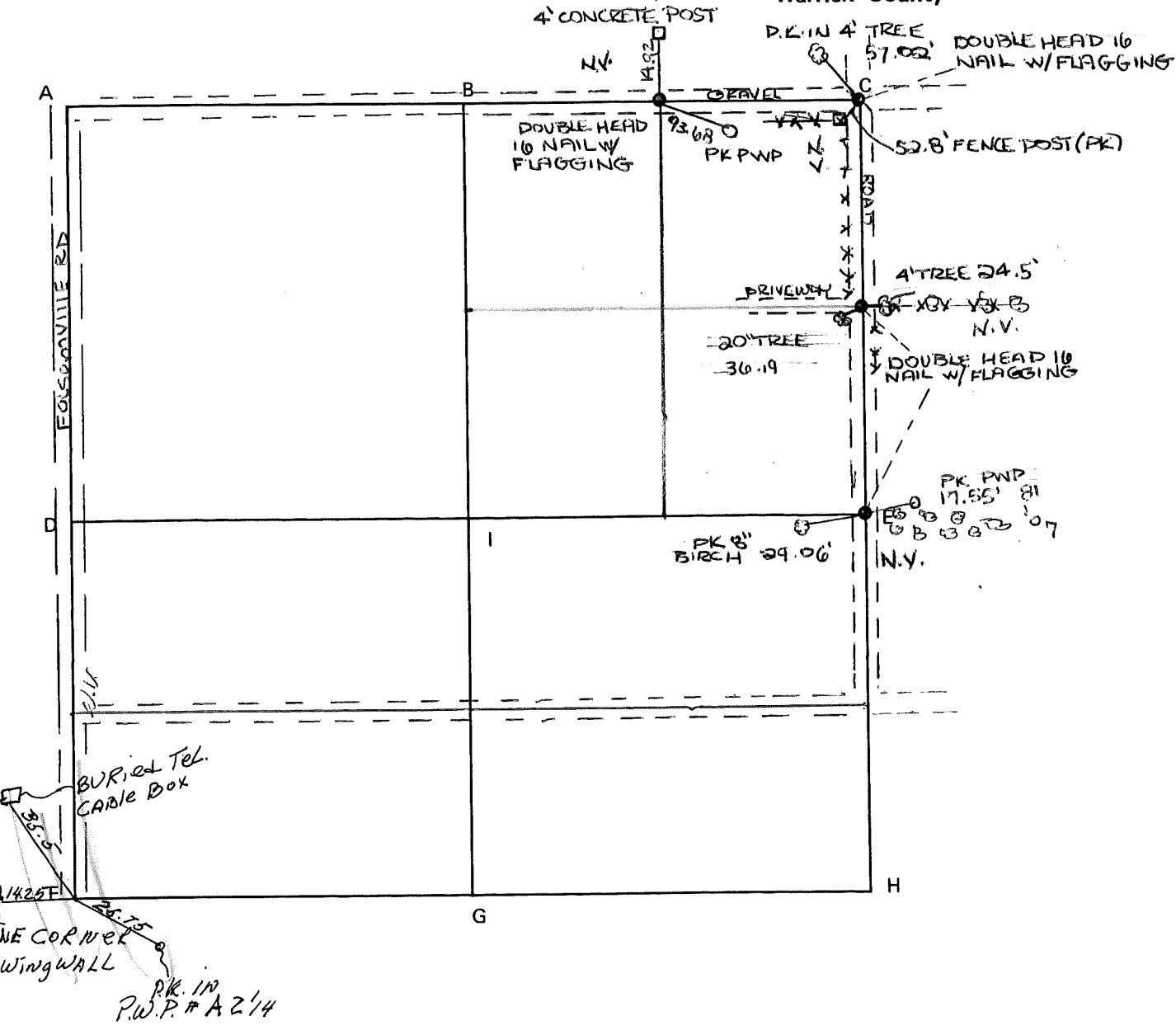
CORNER CODE SYSTEM
Warrick County



NOTES

CORNER CODE SYSTEM
Warrick County

NOTES



4' CONCRETE POST

D.K. IN 4' TREE 57.02' DOUBLE HEAD 10 NAIL W/ FLAGGING

DOUBLE HEAD 10 NAIL W/ FLAGGING

PK PWP

52.8' FENCE POST (PK)

PRIVILEGE

4' TREE 24.5'

20' TREE 36.19'

DOUBLE HEAD 10 NAIL W/ FLAGGING

PK PWP 17.55' 81' 07'

PK 8' BIRCH 29.06'

N.V.

BURIED Tel. CABLE BOX

NE CORNER Wing WALL

P.W.P. # A 214

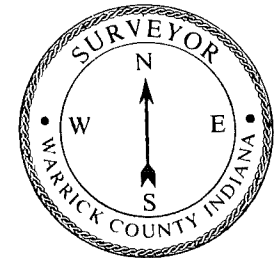
RECORD OF SECTION CORNERS

Warrick County

ion _____ Township _____ Range _____ 2nd Principle Meridian _____

Date	Cor	Location	Description of		Distance from Corner	Bearing from Corner (North Assumed)	Cond	Check By	Remarks
			Monument	Reference					
6/28/73	f		1 iron pin	buried telephone cable	Box 35.5				SWC
			2.	NE cor. Wingwall	14.25				
			3.	pk in pwp #A21/4	25.75				in Folsomville north 100 rd. (called Jockey)

CORNER RECORD
WARRICK COUNTY



DESCRIPTION :

SW CORNER _____

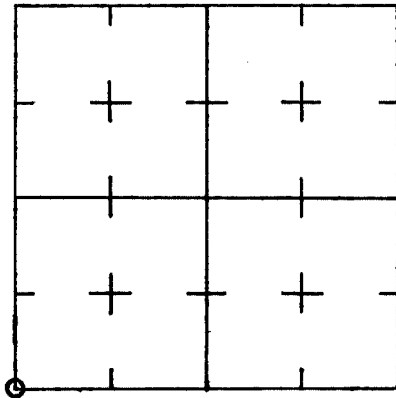
SECTION 11, T. 4 S. R. 7 W.

2nd PRINCIPLE MERIDIAN

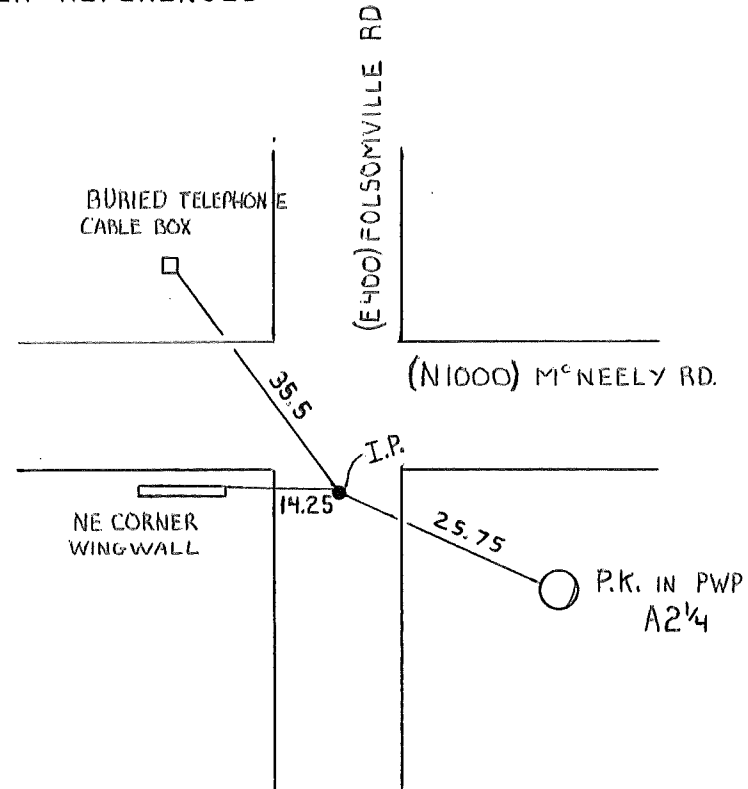
WARRICK COUNTY SURVEYOR

MICHAEL IRVIN

INDICATE CORNER REFERENCED



DESCRIBE CORNER REFERENCED



STATE PLANE COORDINATE DATA

INDIANA ZONE: WEST

X _____

Y _____

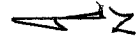
ESTABLISHED BY:

APPROVED BY

DATE

REFERENCED BY:

DATE



(INTERSECTION COMMONLY CALLED JACKY)

BURIED TELEPHONE CABLE BOX

N 1000

35.5'

25.25'

P.K. IN PUP A2 1/4

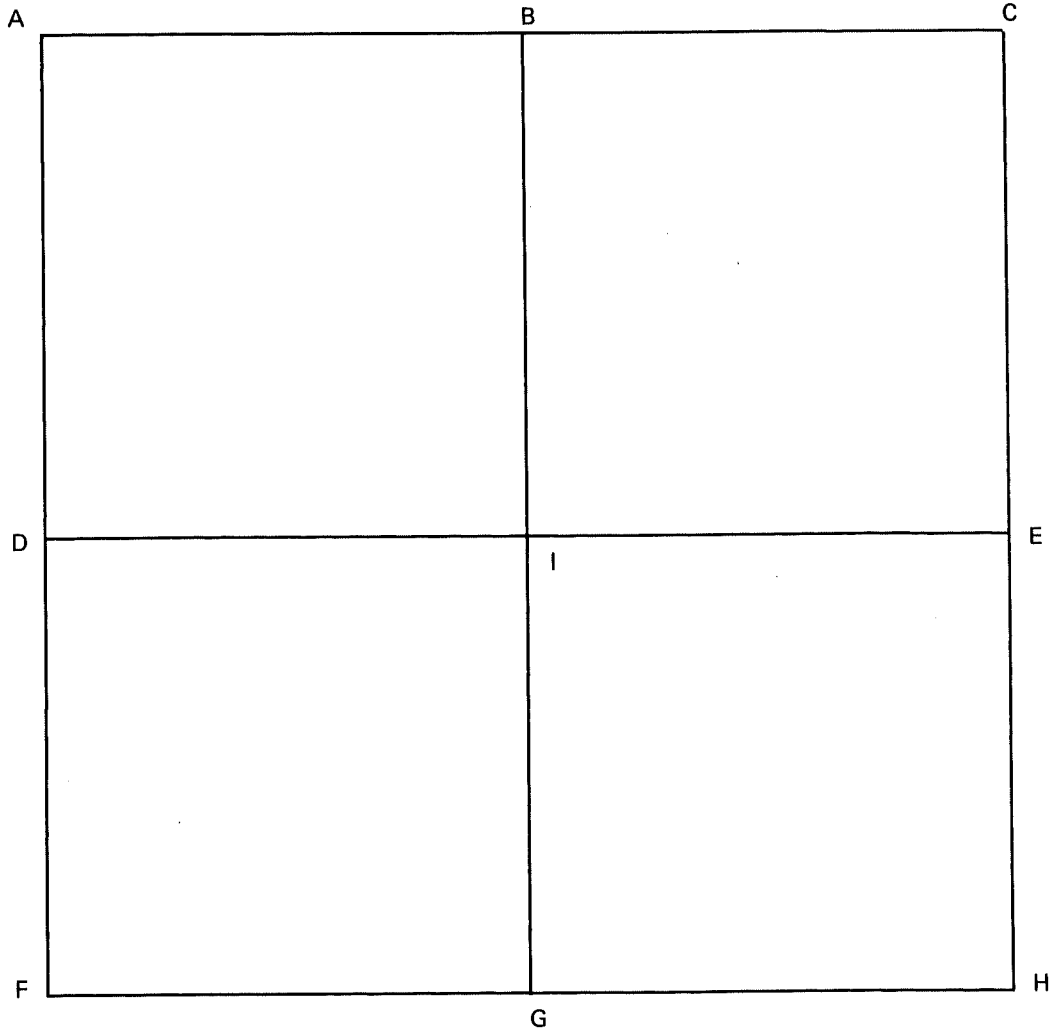
NE CORNER WINGWALL

SW CORNER

11-4-7

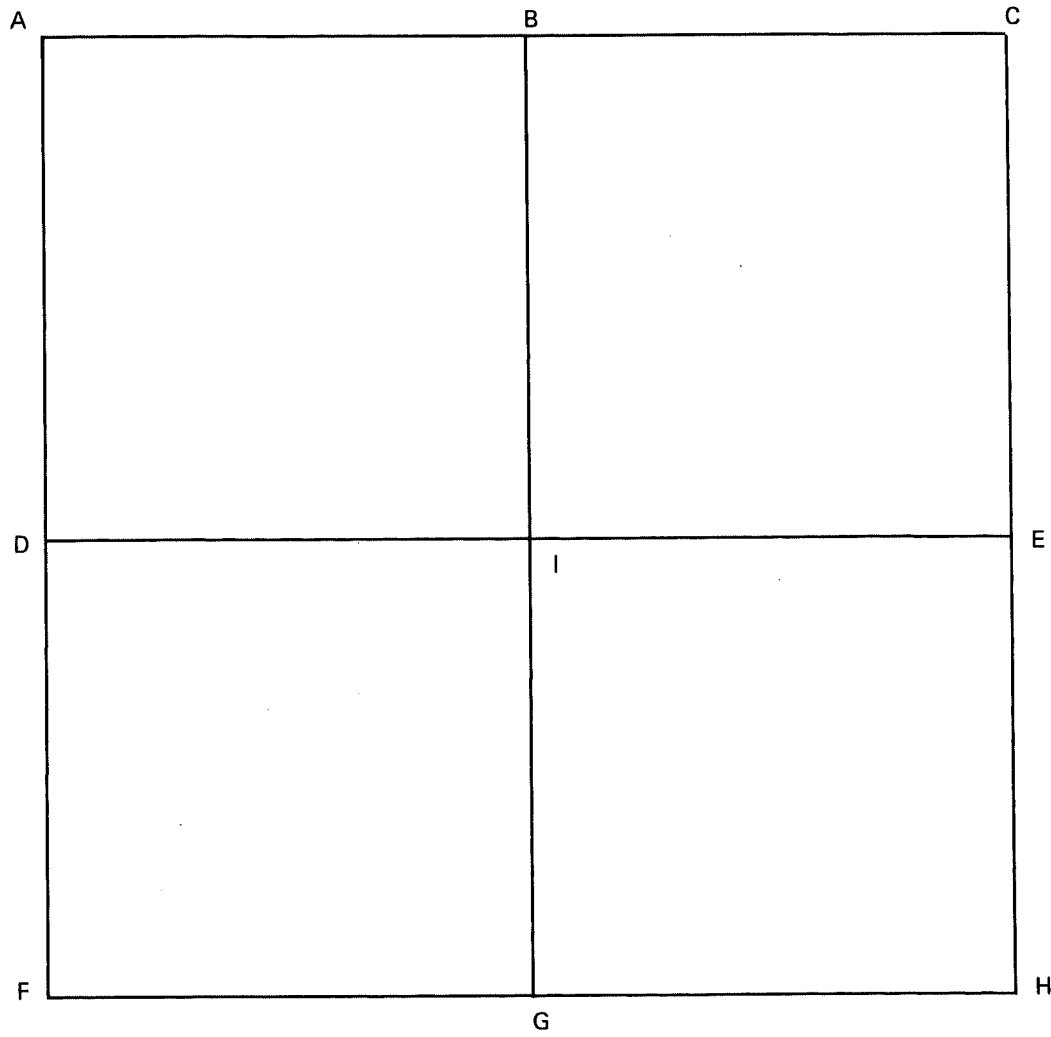
Folsomville Rd

CORNER CODE SYSTEM
Warrick County



NOTES

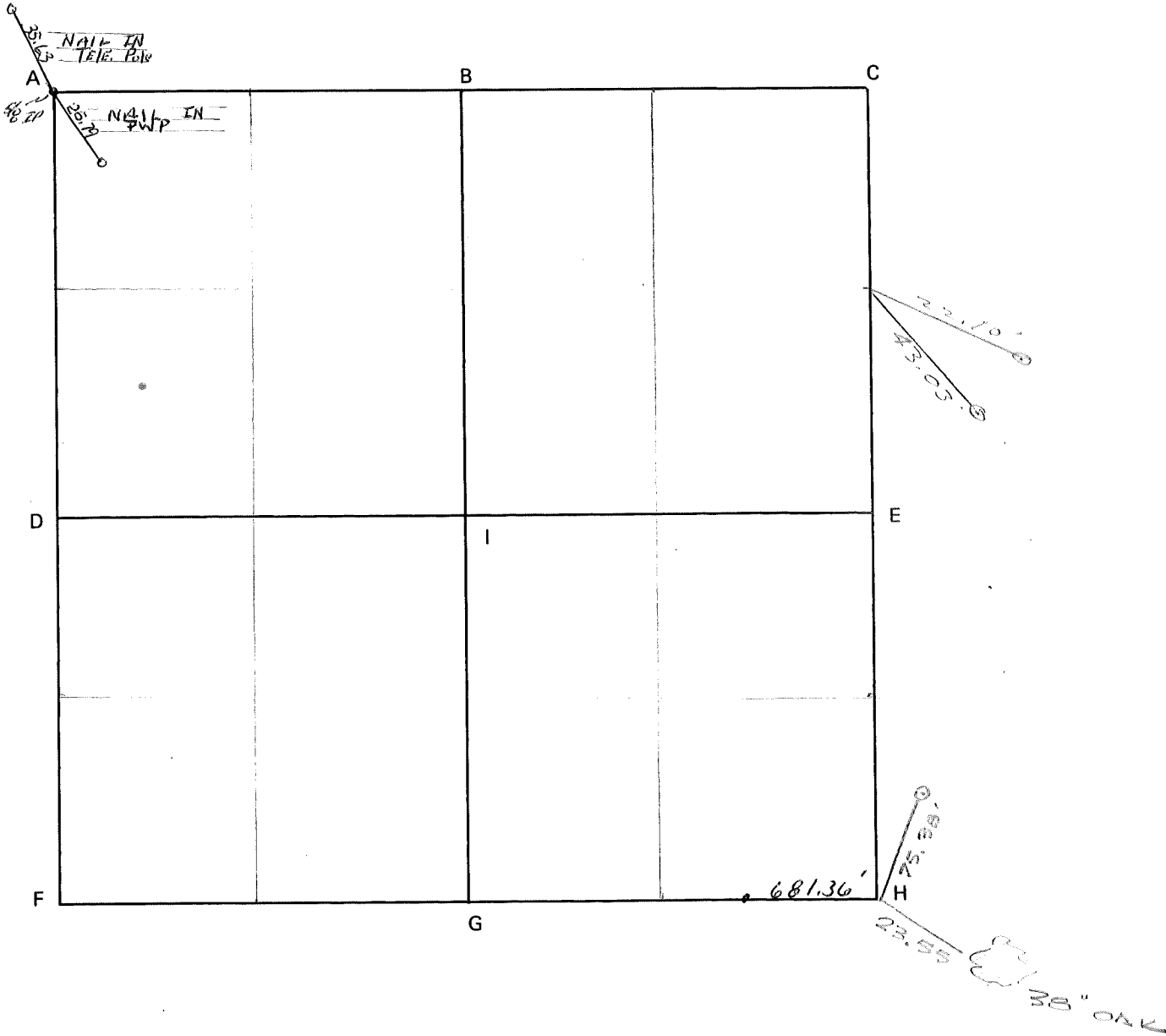
CORNER CODE SYSTEM
Warrick County



NOTES

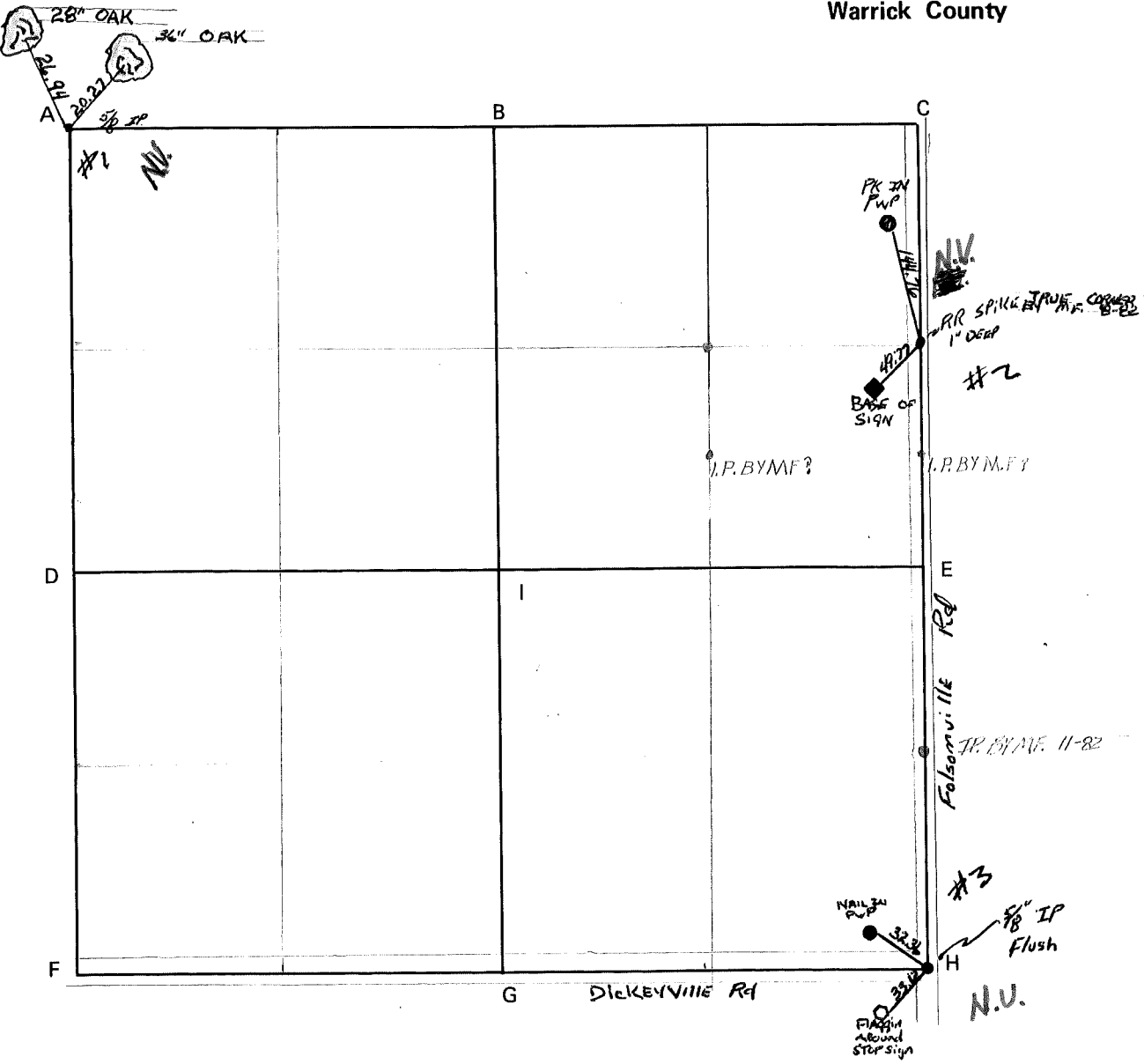
CORNER CODE SYSTEM
Warrick County

NOTES

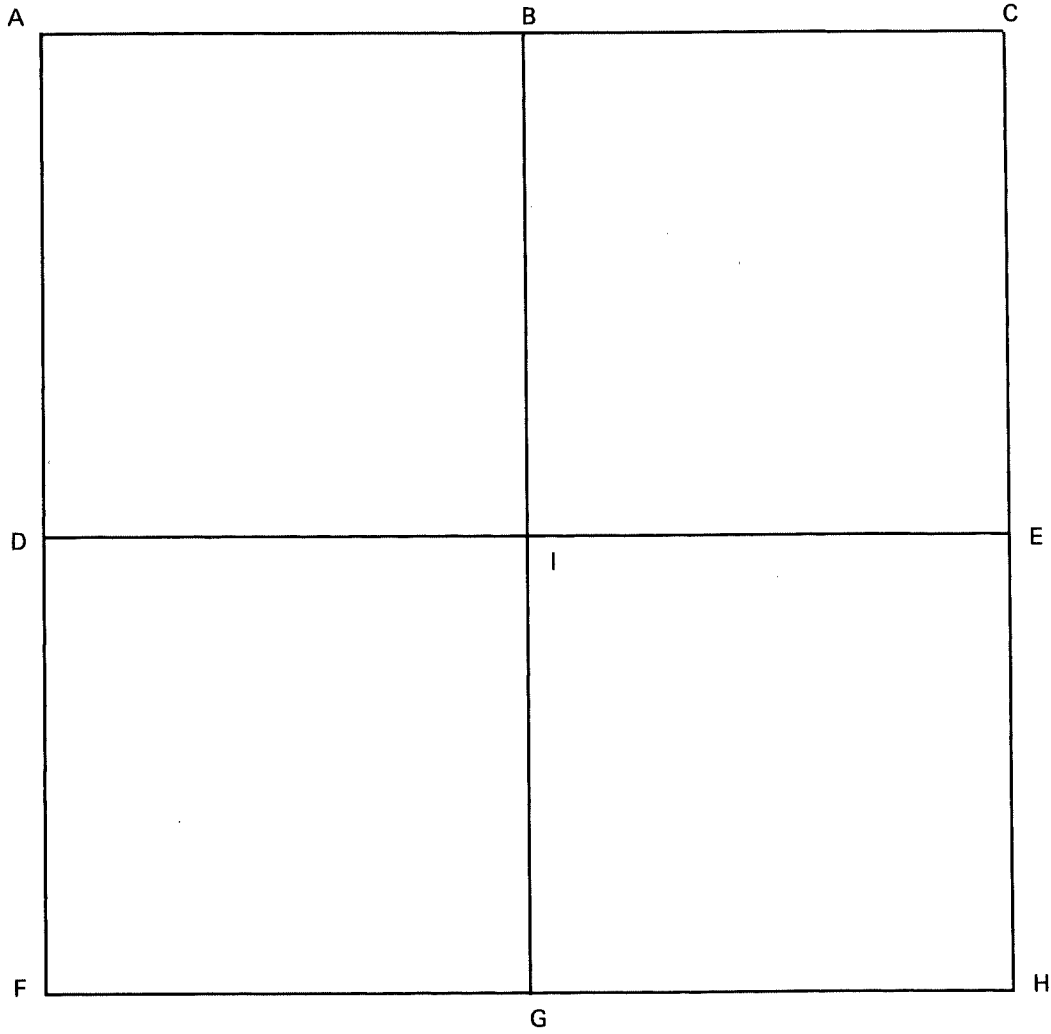


CORNER CODE SYSTEM
Warrick County

NOTES

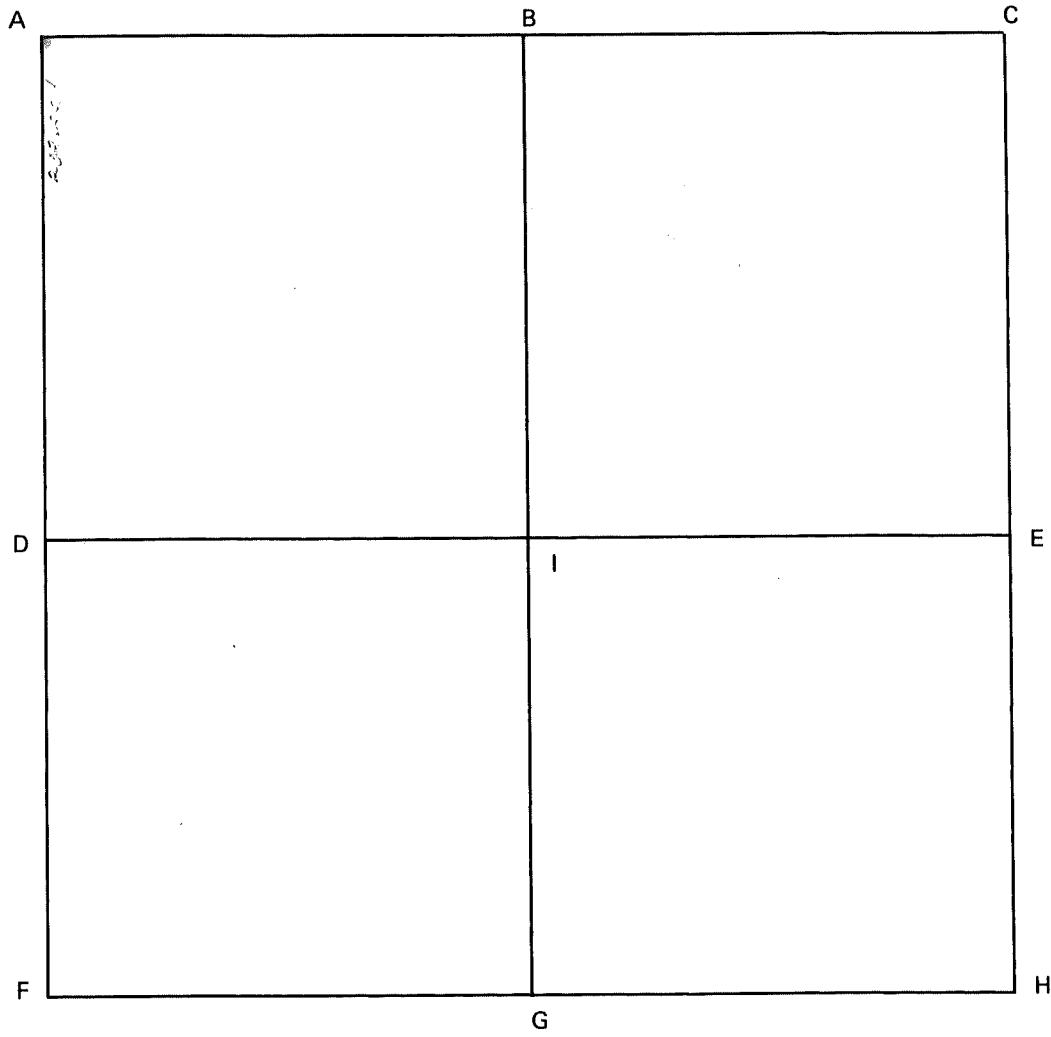


CORNER CODE SYSTEM
Warrick County



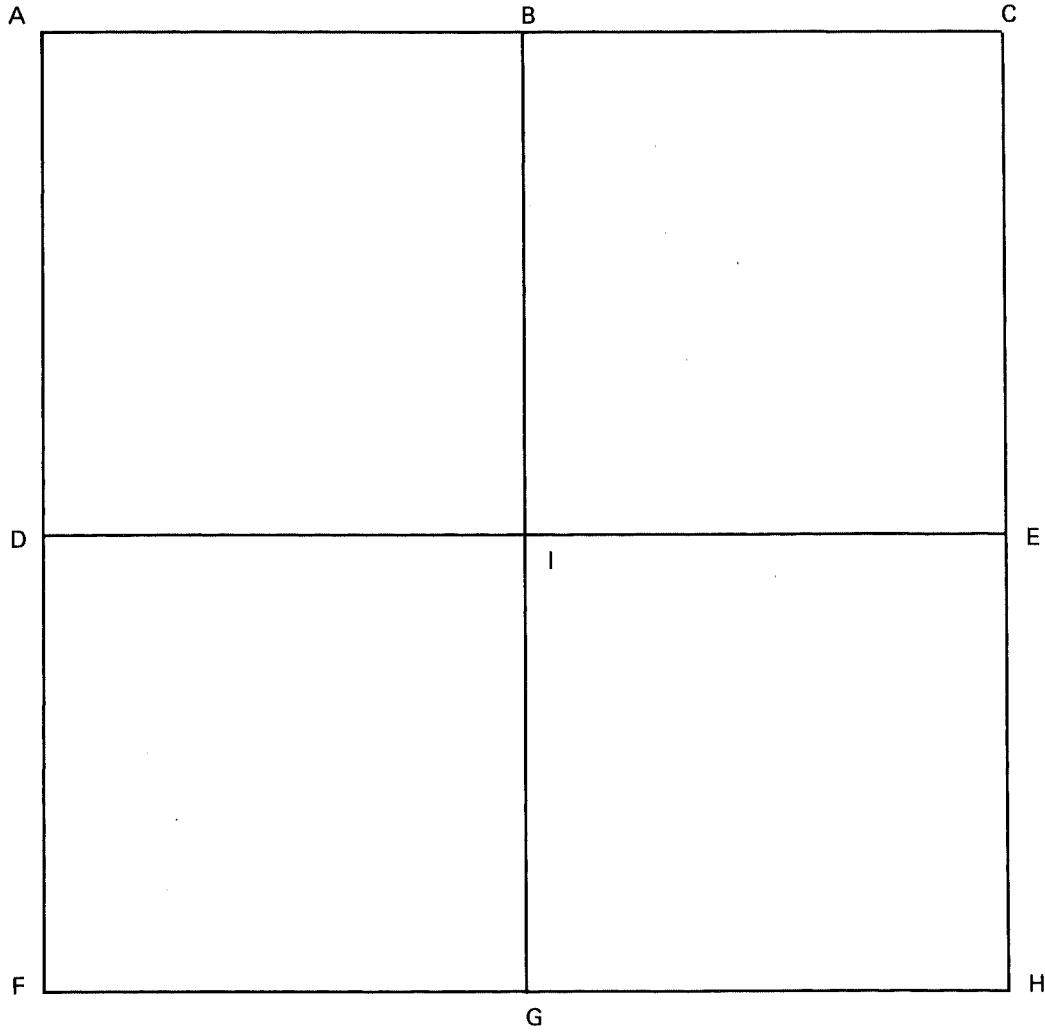
NOTES

CORNER CODE SYSTEM
Warrick County



NOTES

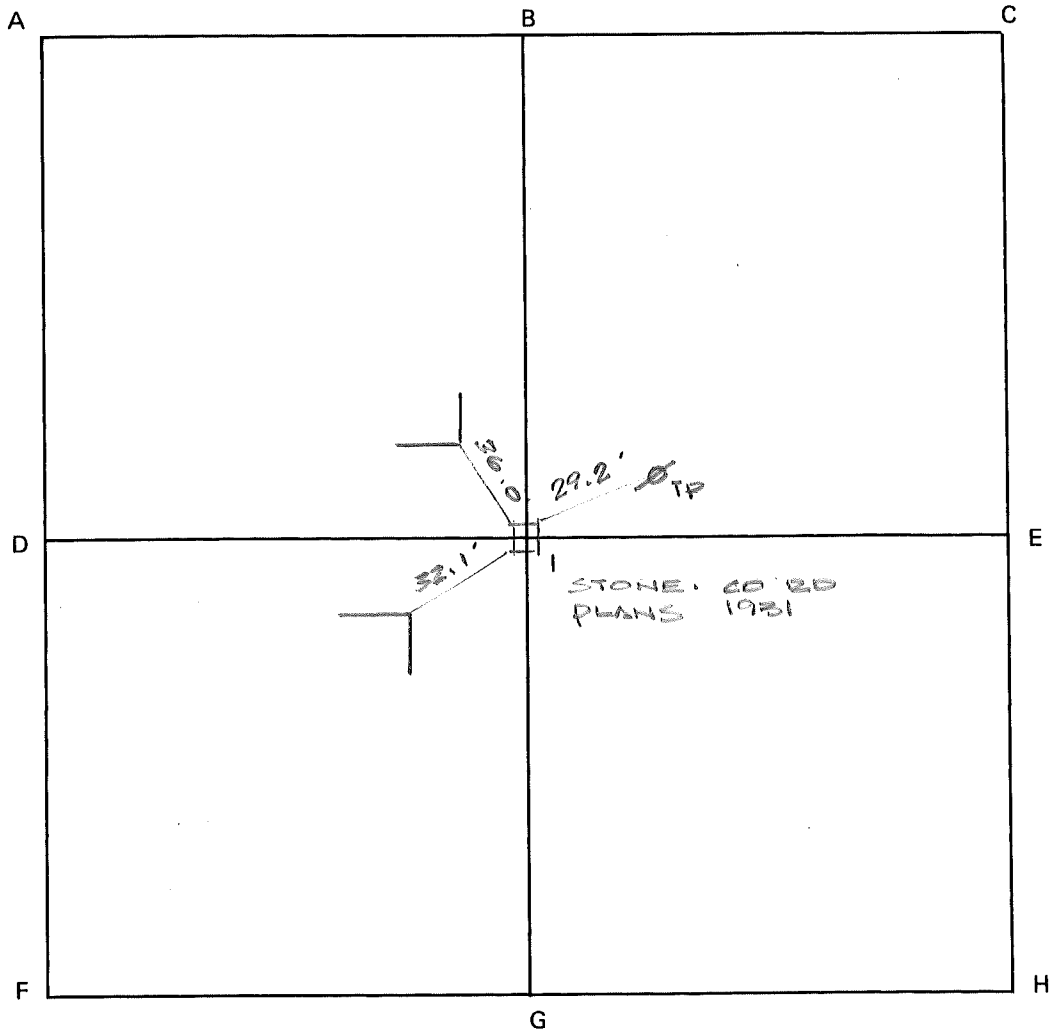
CORNER CODE SYSTEM
Warrick County



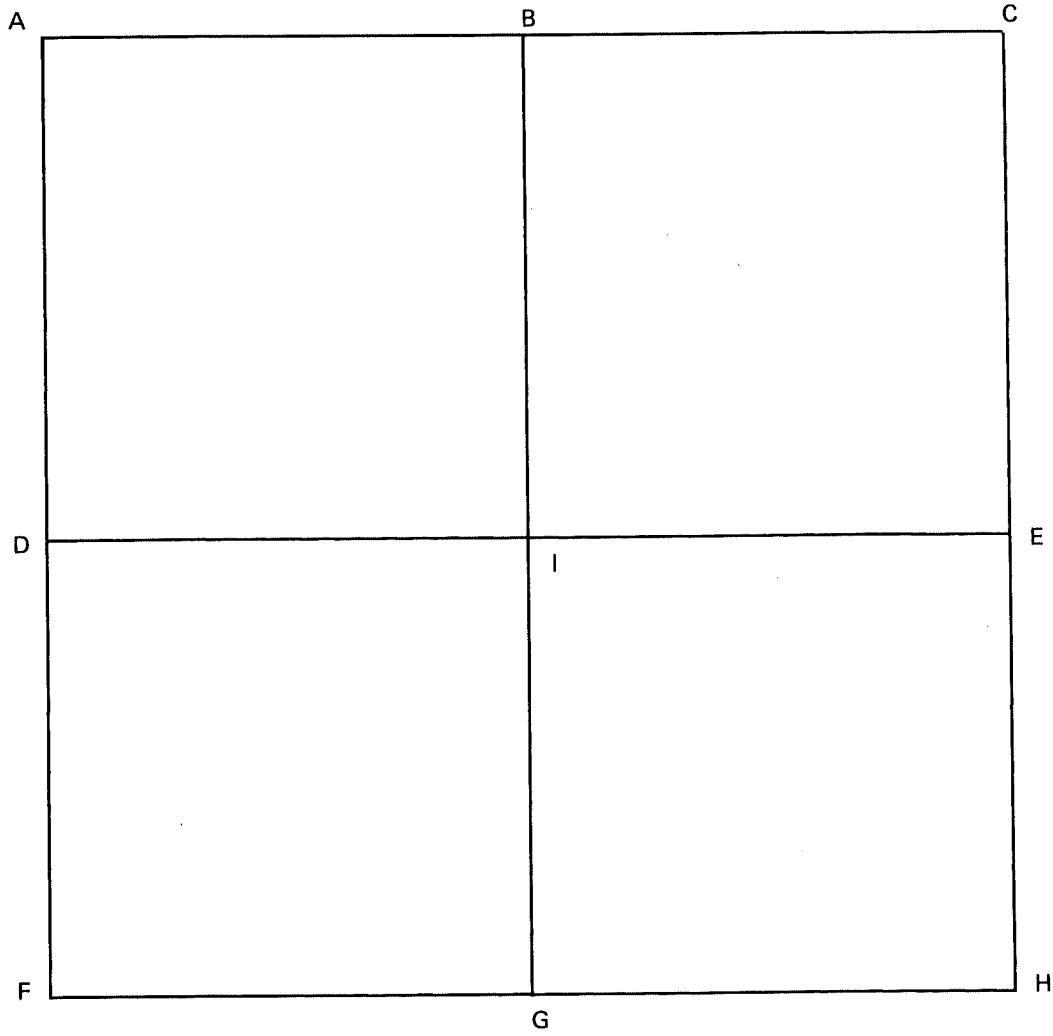
NOTES

CORNER CODE SYSTEM
Warrick County

NOTES

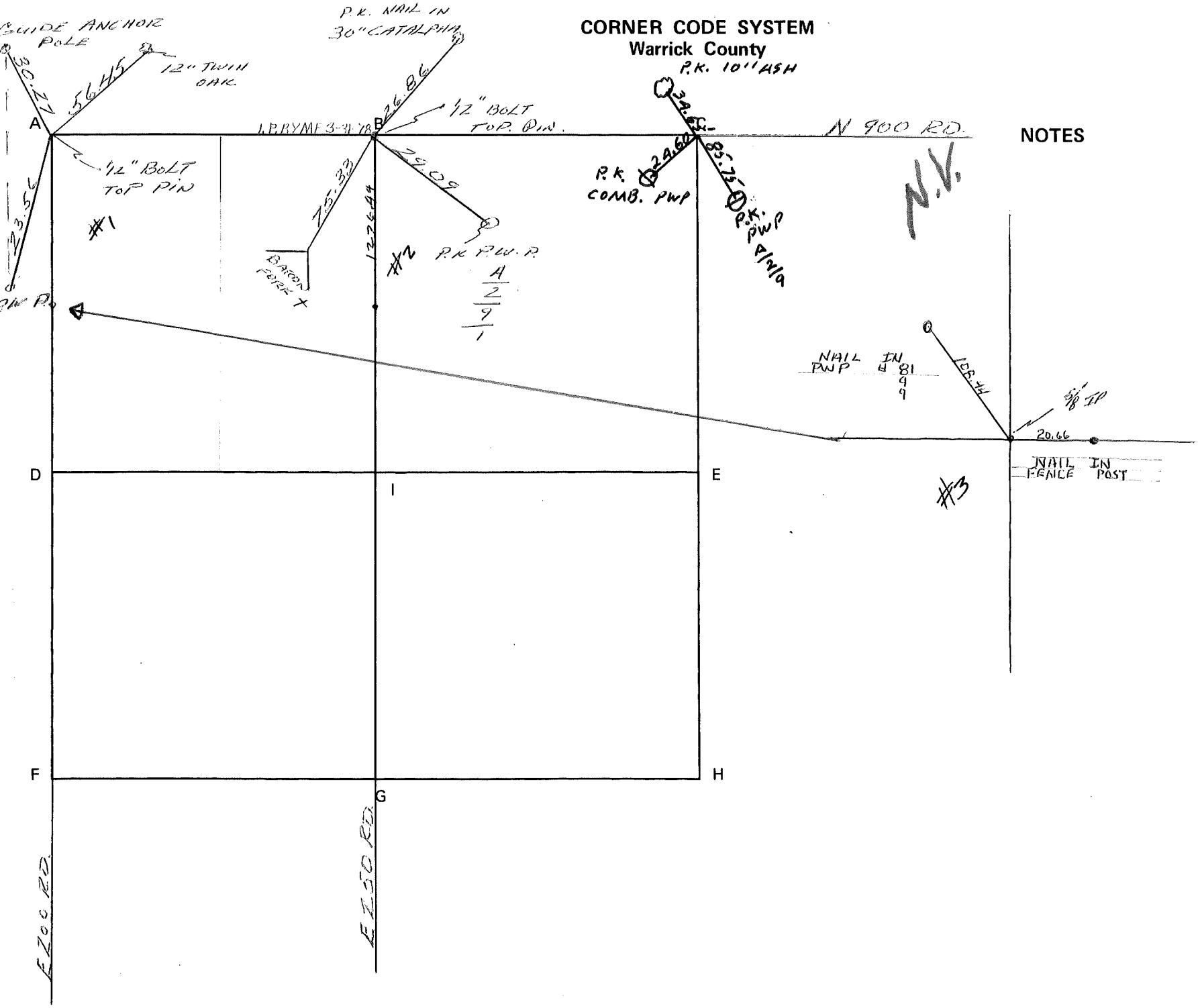


CORNER CODE SYSTEM
Warrick County



NOTES

CORNER CODE SYSTEM
 Warrick County
 P.K. 10" ASH



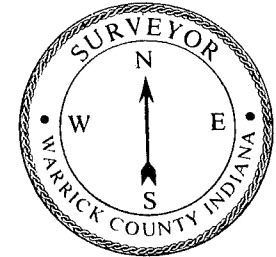
NOTES

N.V.

#3

A
2
9
1

CORNER RECORD
WARRICK COUNTY



DESCRIPTION:

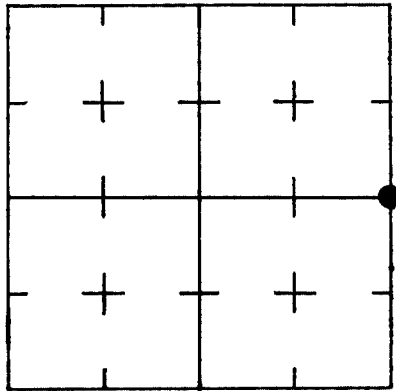
NE CORNER SE 1/4 NE 1/4

SECTION 22, T. 4 S. R. 7 W.

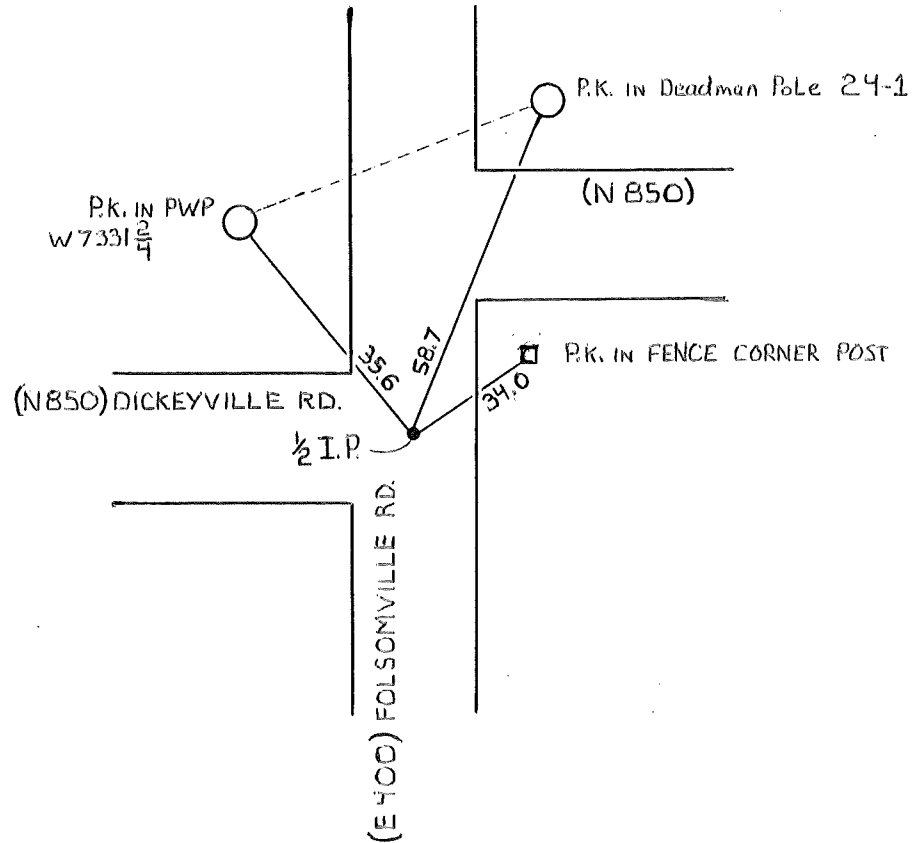
2nd PRINCIPLE MERIDIAN

WARRICK COUNTY SURVEYOR
MICHAEL IRVIN

INDICATE CORNER REFERENCED



DESCRIBE CORNER REFERENCED



STATE PLANE COORDINATE DATA

INDIANA ZONE: WEST

X _____

Y _____

ESTABLISHED BY:

NOT VERIFIED

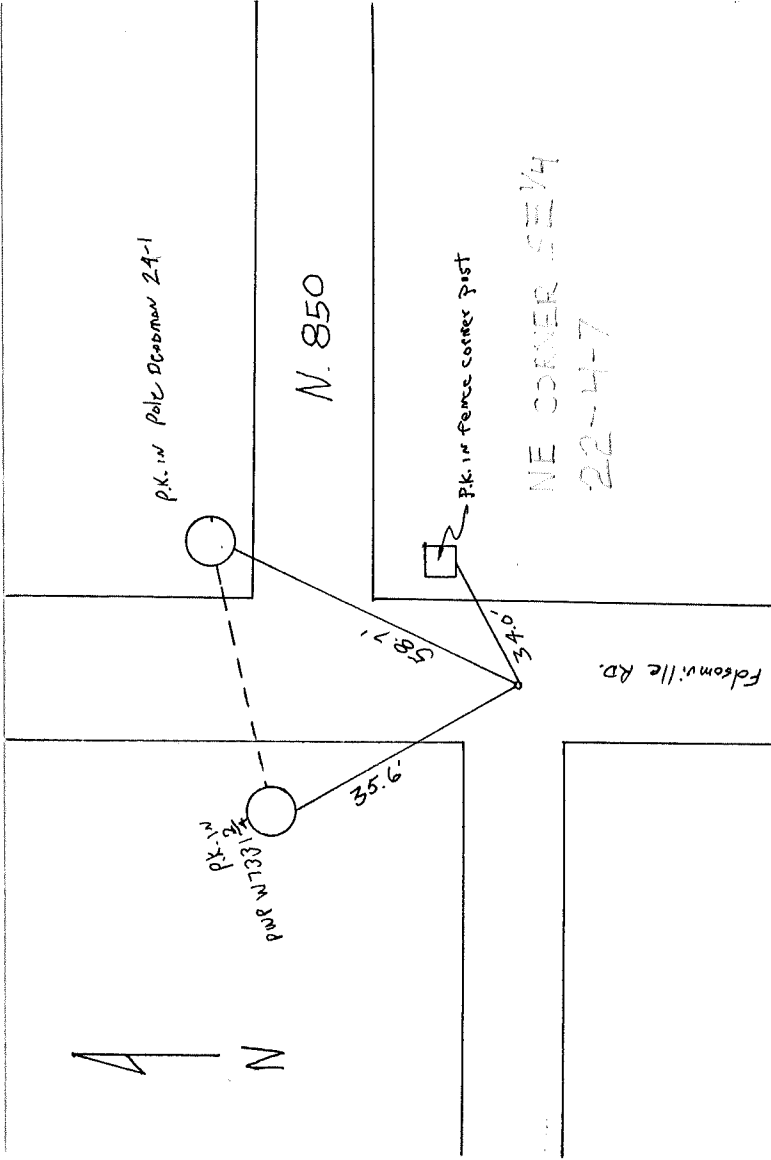
APPROVED BY

DATE
6-28-73

REFERENCED BY:

DATE

A
N



P.K. in Pole Deadman 24-1

N. 850

P.K. in fence corner Post

NE CORNER 52 3/4
22-4-7

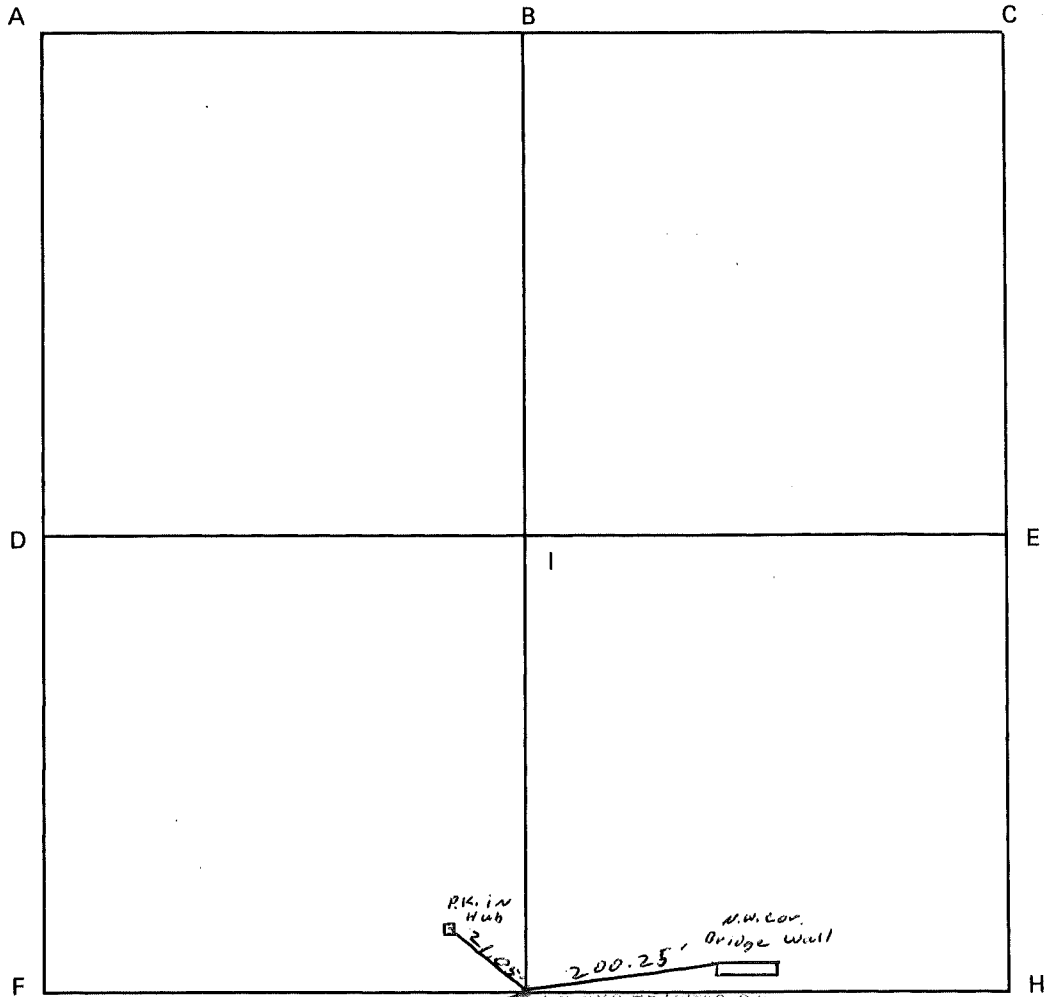
Folsomville Rd.

58.7'

9.58'

34.0'

CORNER CODE SYSTEM
Warrick County

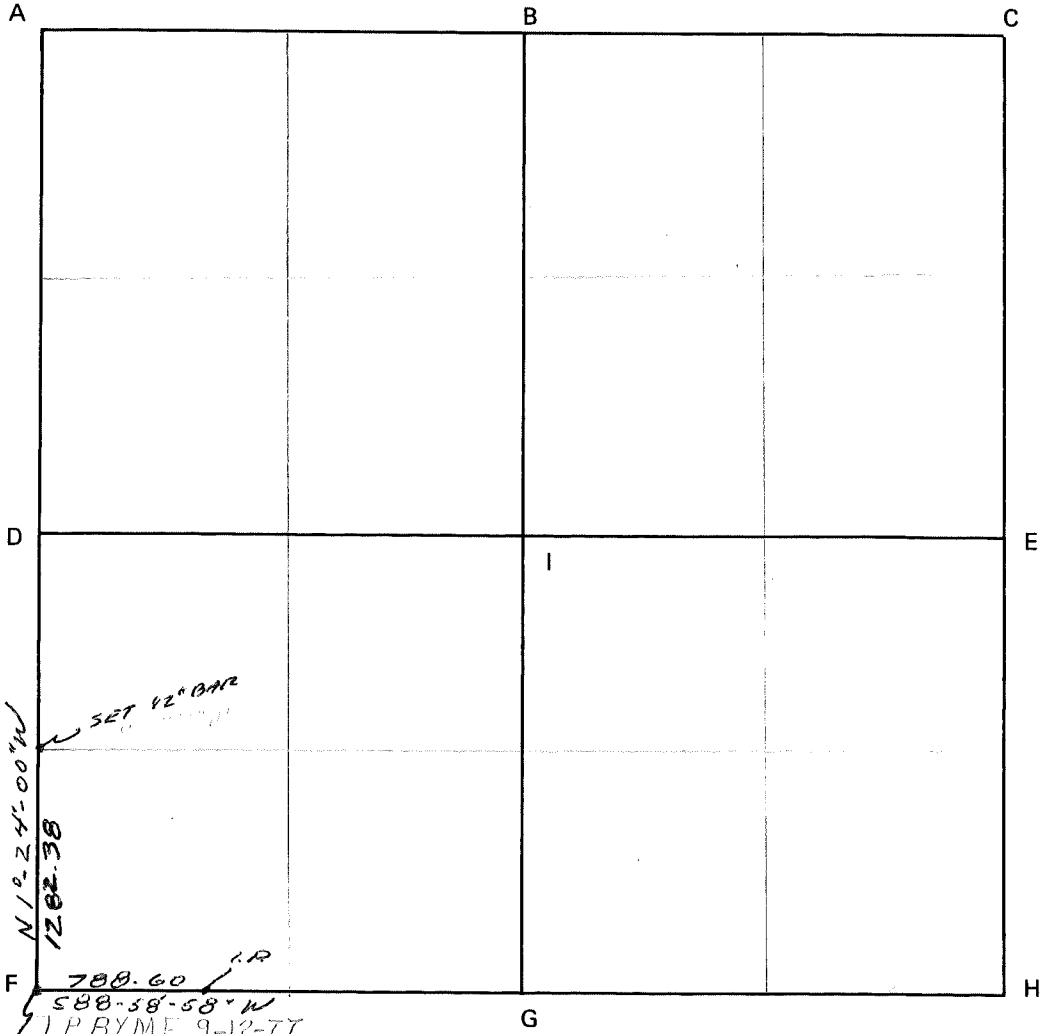


NOTES

SW cor. S¹/₄ SE¹/₄

62.2'
P.K. in
24" Pin OAK
J.P. BY G. TRASH 193-9-73

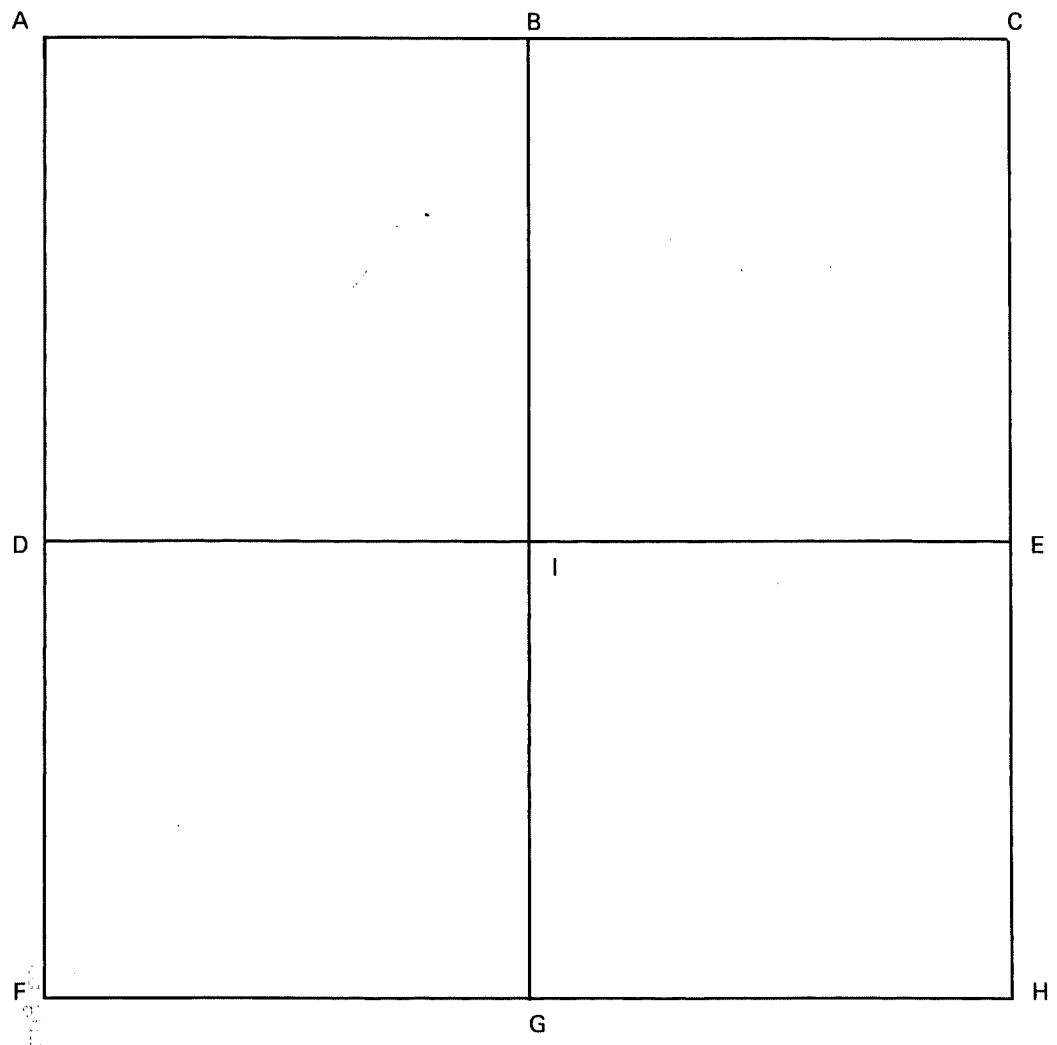
CORNER CODE SYSTEM
Warrick County



NOTES

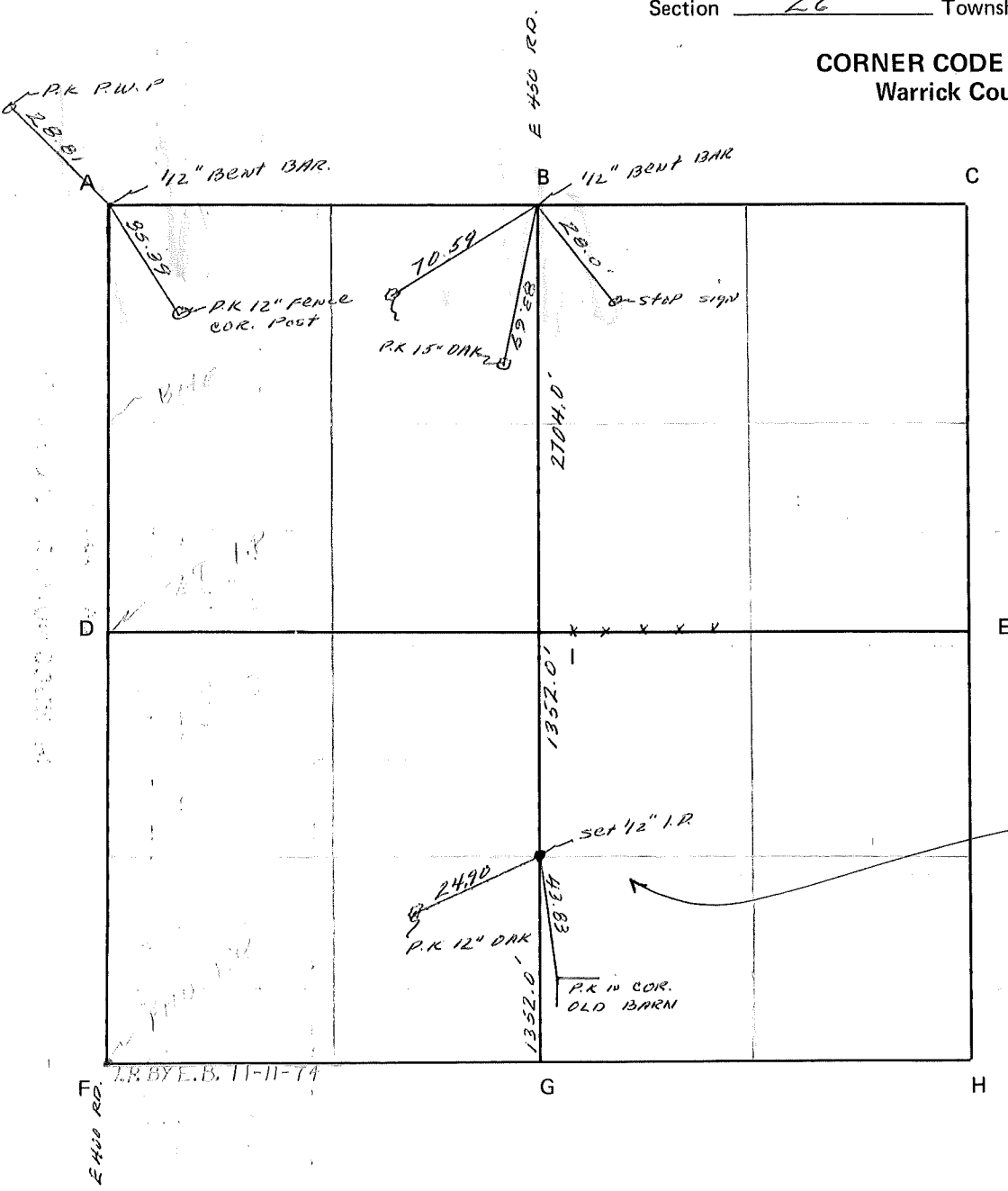
N 12° 24' 00" W
 1282.38
 SET 12" I.P.
 788.60
 S 88° 58' 58" W
 I.P.
 I.P. BY MF 9-12-77
 SET 1" I.P.

CORNER CODE SYSTEM
Warrick County



NOTES

CORNER CODE SYSTEM
Warrick County



N 800 RD

NOTES

SW Cor. Sw 1/4 SE 1/4

LR BY E.B. 11-11-74

E 450 RD

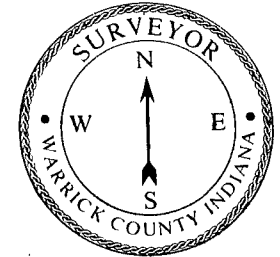
RECORD OF SECTION CORNERS

Warrick County

Section 26 Township 4 Range 7 2nd Principle Meridian

Date	Cor	Description of		Distance from Corner	Azimuth from Corner (North Assumed)	Cond	Check By	Remarks
		Monument	Reference					
	A							
	B							
	C							
	D							
	E							
	F							
	G							
	H							
	I							

CORNER RECORD
WARRICK COUNTY



DESCRIPTION:

NW CORNER

NW 1/4 NW 1/4

SECTION 26, T. 4 S.

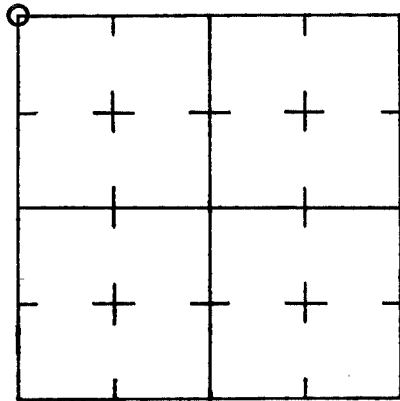
R. 7 W.

2nd PRINCIPLE MERIDIAN

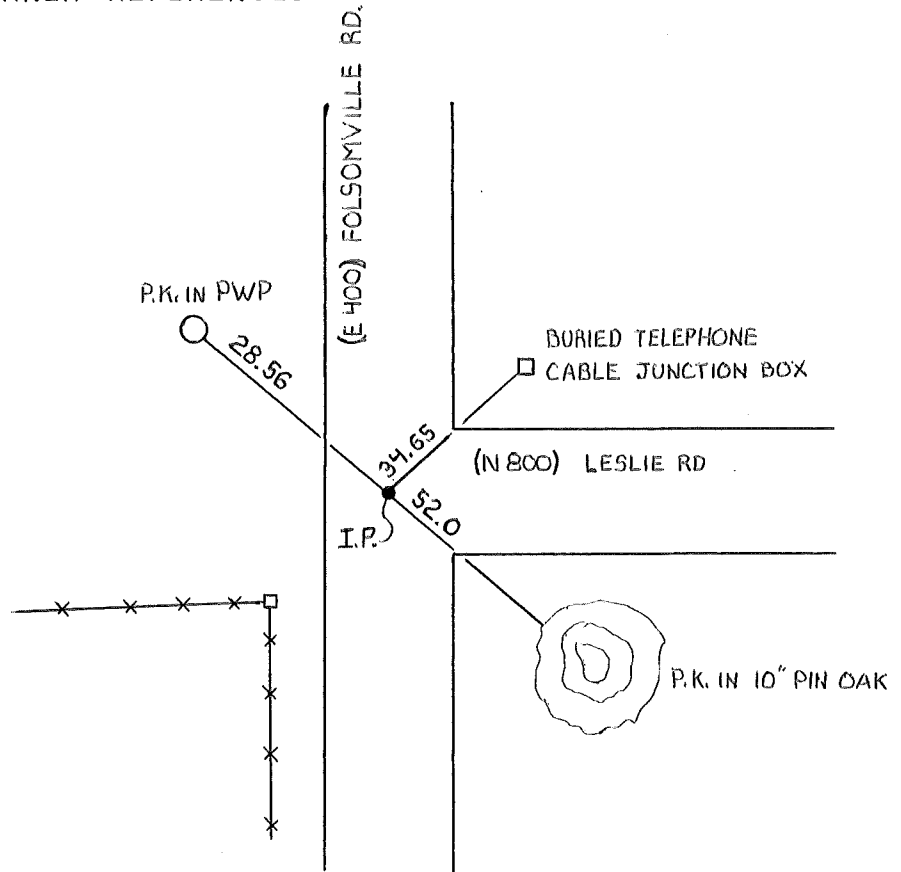
WARRICK COUNTY SURVEYOR

MICHAEL IRVIN

INDICATE CORNER REFERENCED



DESCRIBE CORNER REFERENCED



NOT VERIFIED

STATE PLANE COORDINATE DATA

INDIANA ZONE: WEST

X _____

Y _____

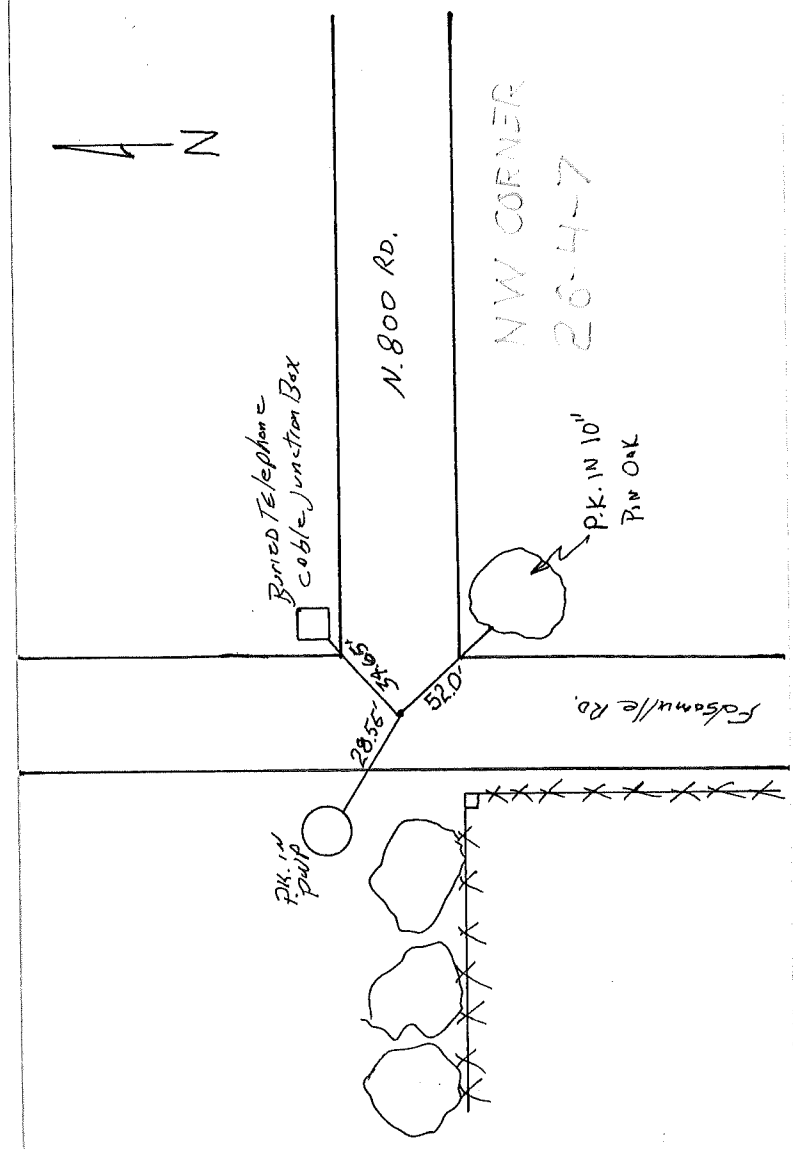
ESTABLISHED BY:

APPROVED BY

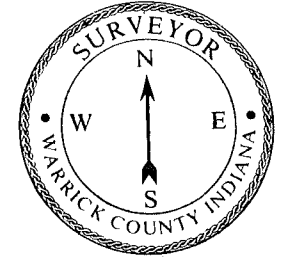
DATE
6-28-73

REFERENCED BY:

DATE



CORNER RECORD
WARRICK COUNTY



DESCRIPTION:

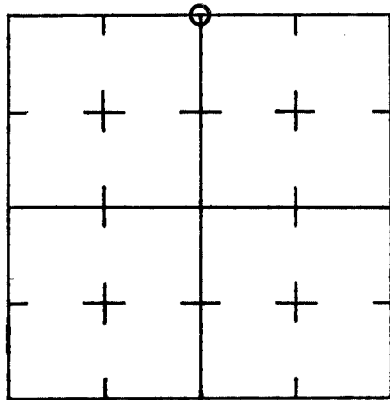
NE CORNER NW 1/4

SECTION 26, T. 4 S. R. 7 W.

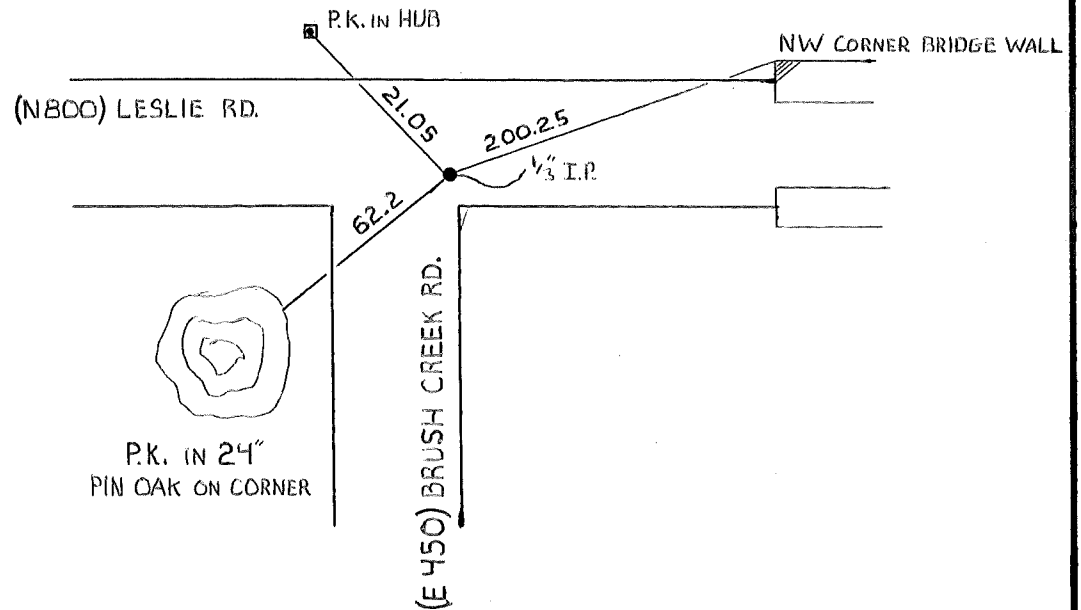
2nd PRINCIPLE MERIDIAN

WARRICK COUNTY SURVEYOR
MICHAEL IRVIN

INDICATE CORNER REFERENCED



DESCRIBE CORNER REFERENCED



NOT VERIFIED

STATE PLANE COORDINATE DATA

INDIANA ZONE: WEST

X _____

Y _____

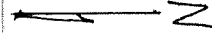
ESTABLISHED BY:

APPROVED BY

DATE
6-23-73

REFERENCED BY:

DATE



N. 800 RD.

NEW CORNER
BRIDGE
WALK

P.K. 14
Hub

21.05'

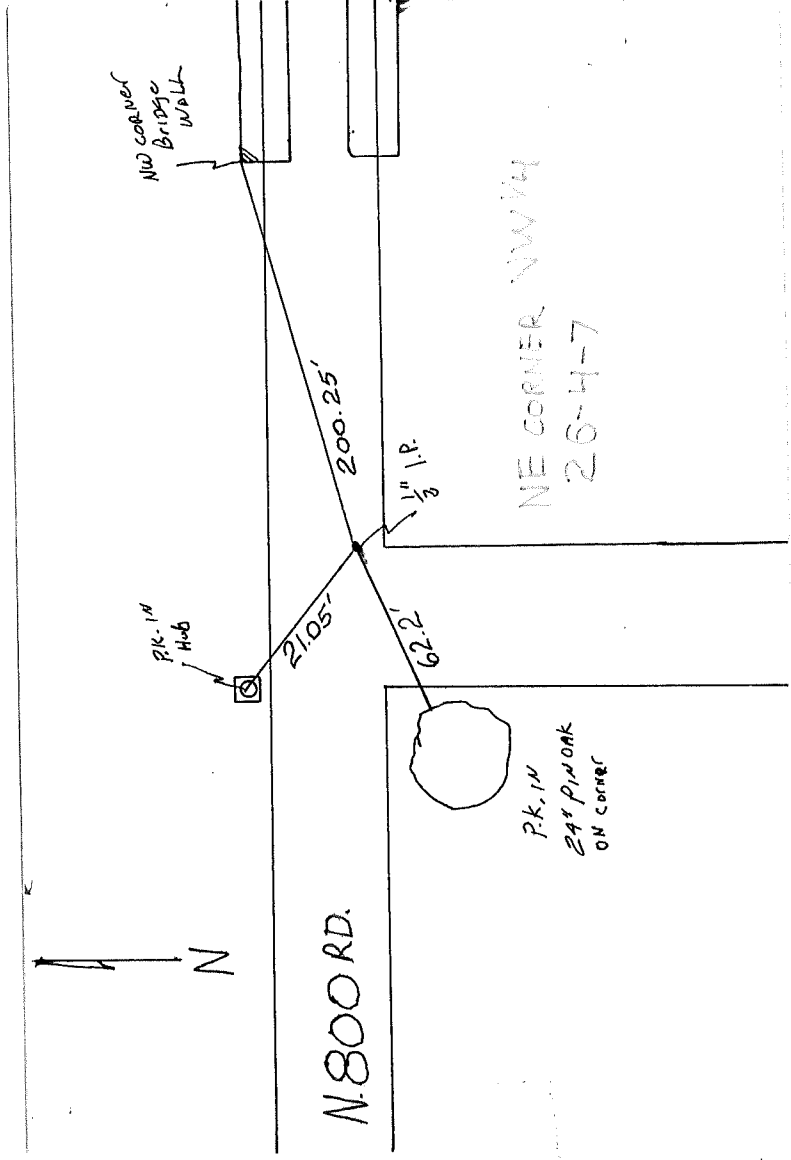
200.25'

1/8" I.P.

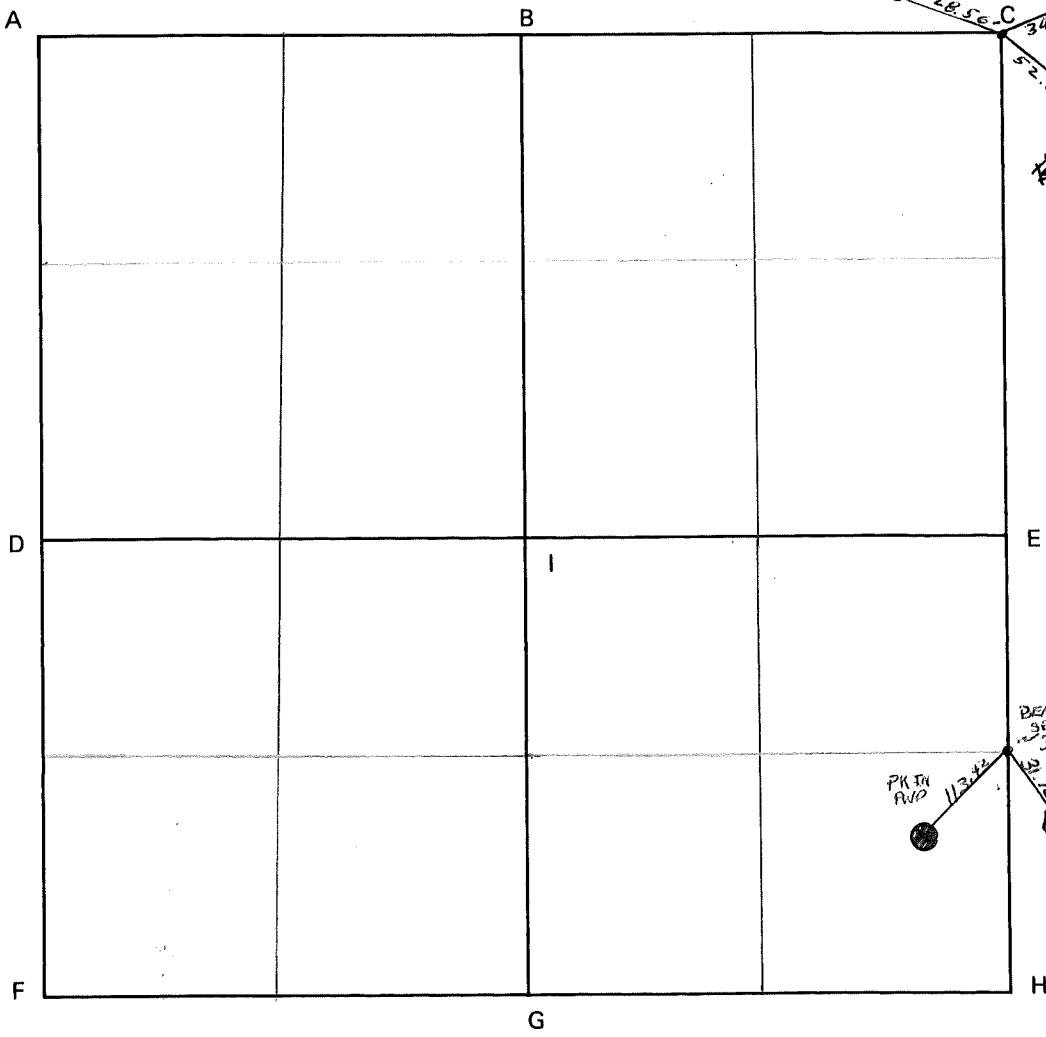
62.2'

NE CORNER NW 1/4
26-4-7

P.K. 14
24' P.O. OAK
ON CORNER



CORNER CODE SYSTEM
Warrick County



P.K. IN P.W.P.O. 28.56 C
34.65
BURIED TELEPHONE
CABLE JUNCTION BOX

P.K. IN 10"
PIN OAK

BENT RR
SPIKE
3' DEEP N.V.

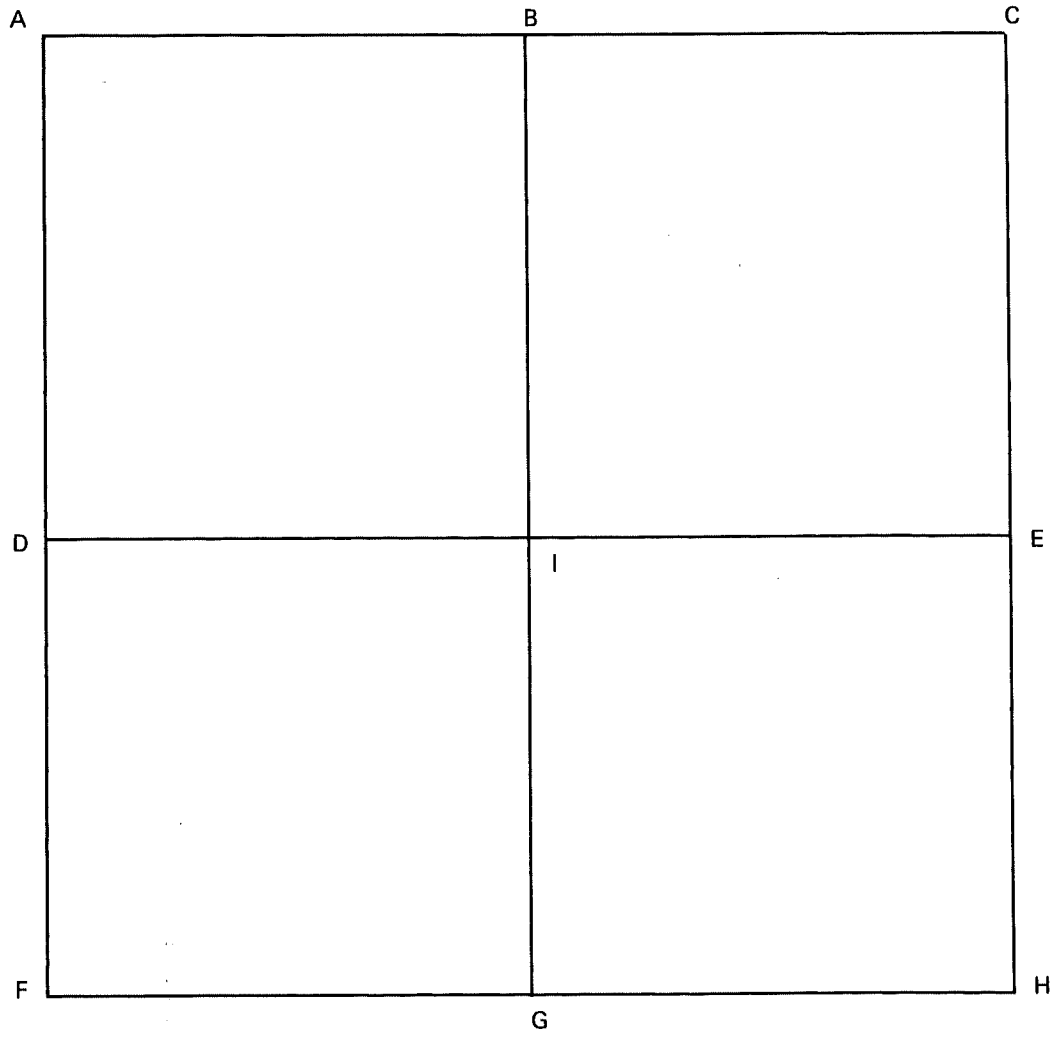
P.K. IN
RVD 11.34

P.K. IN
12' OAK

NOTES

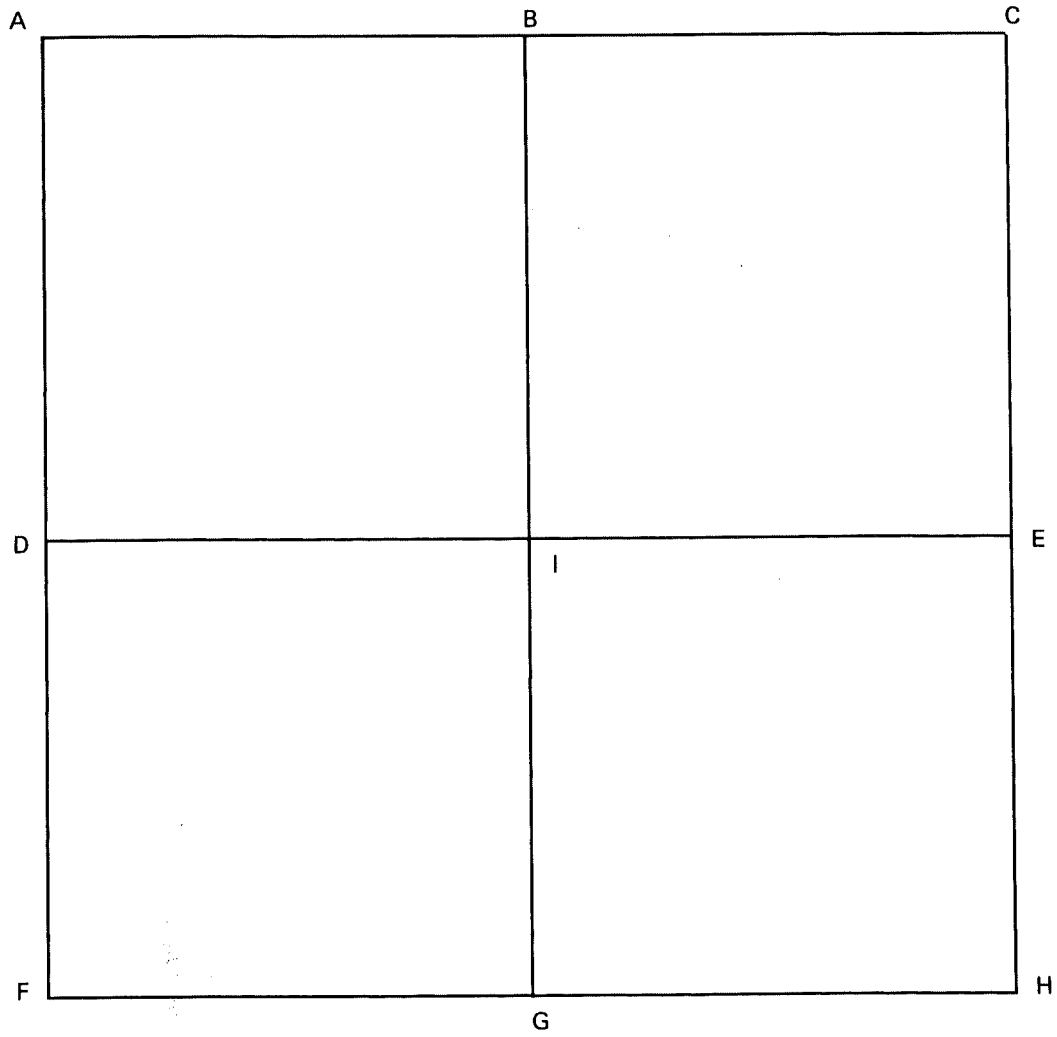
~~#1 - SE cor. NE 1/4 SE 1/4~~
#2 - SE cor. NE 1/4 SE 1/4

CORNER CODE SYSTEM
Warrick County



NOTES

CORNER CODE SYSTEM
Warrick County



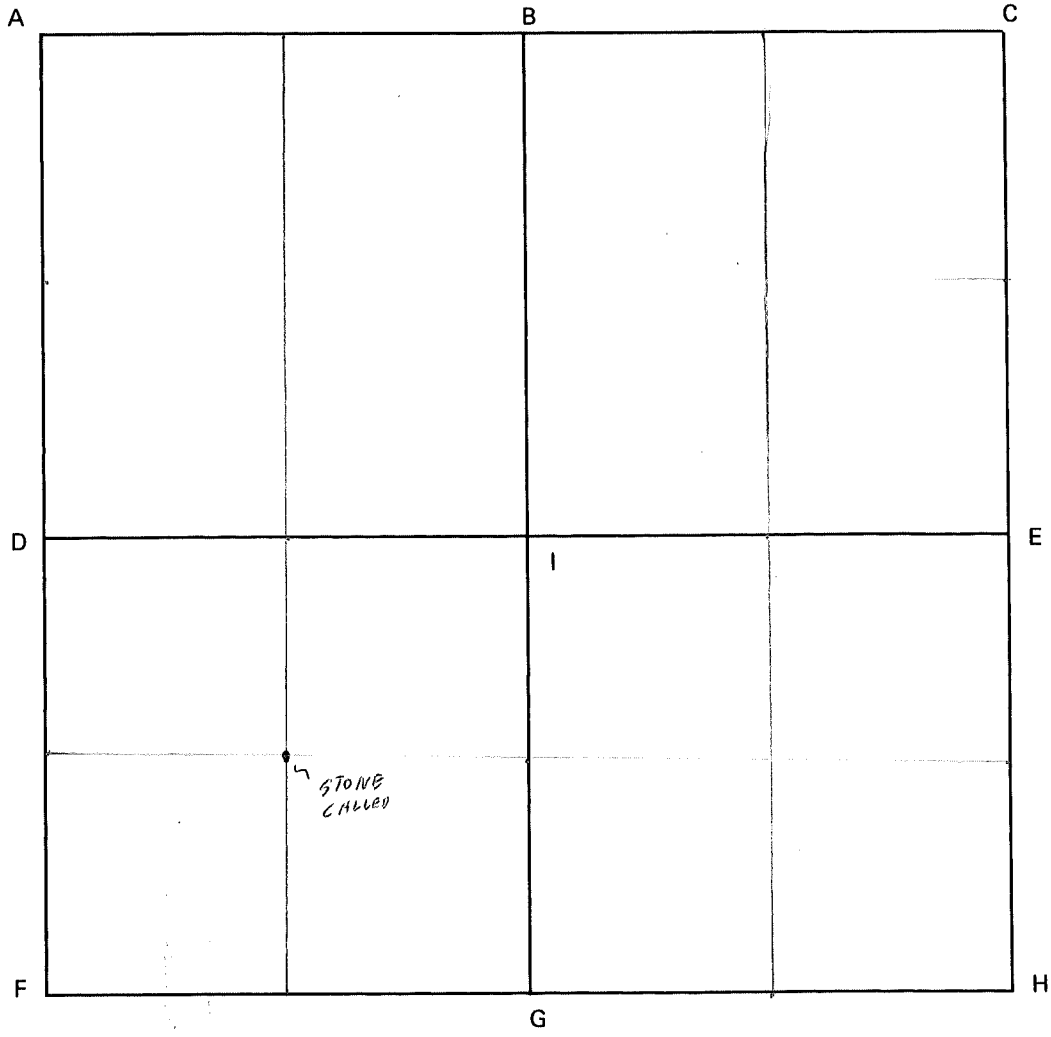
NOTES

CROWVILLE

Crowville 29-4-7

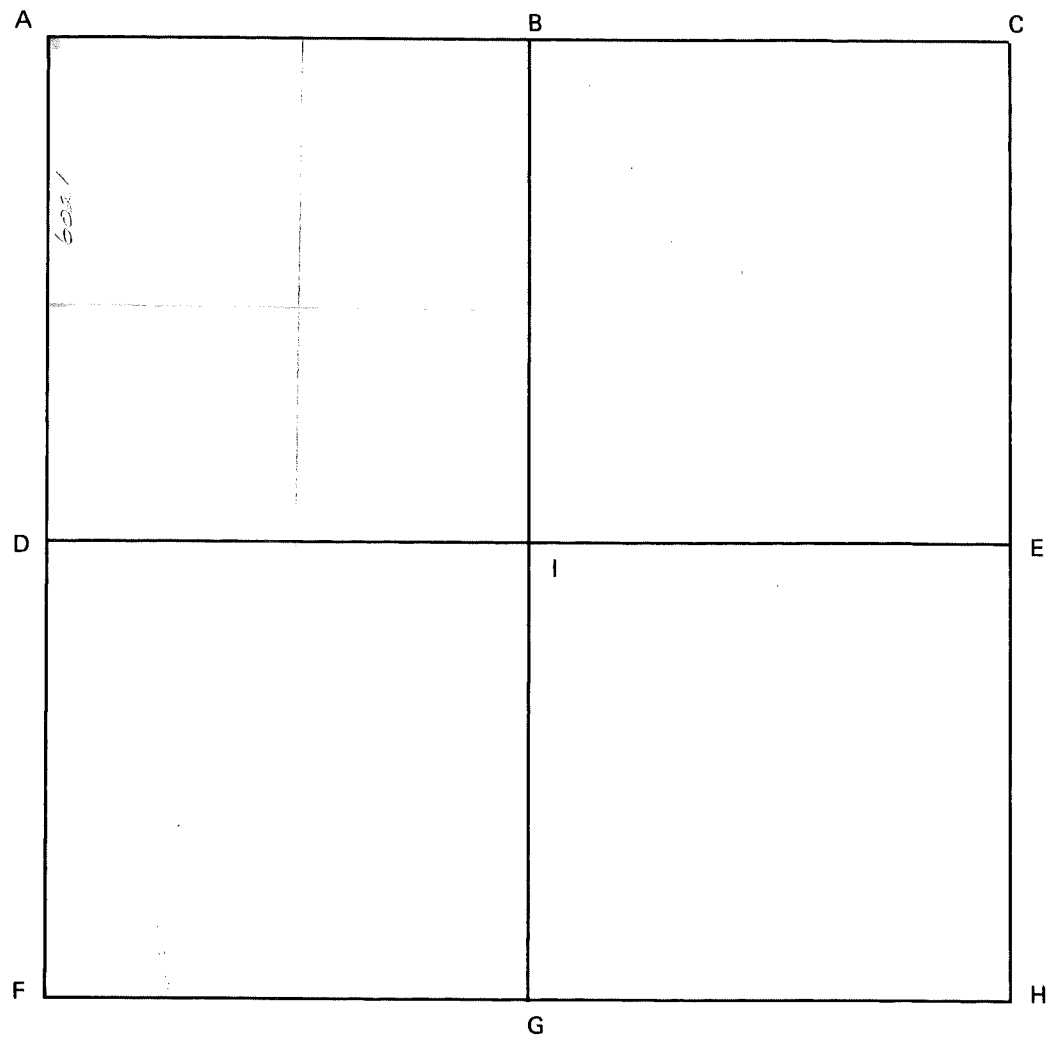
PB 1 PG 11

CORNER CODE SYSTEM
Warrick County



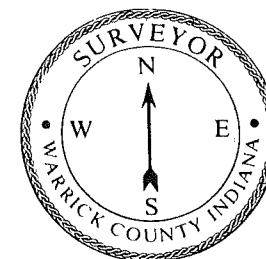
NOTES

CORNER CODE SYSTEM
Warrick County



NOTES

CORNER RECORD
WARRICK COUNTY



DESCRIPTION:

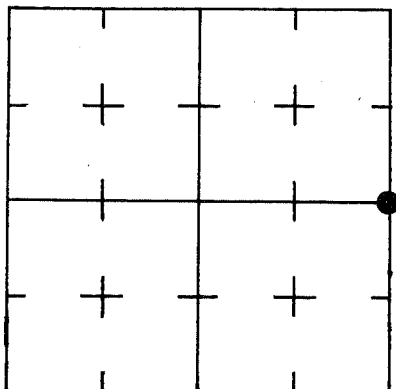
SE CORNER NE 1/4

SECTION 32, T. 4 S. R. 7 W.

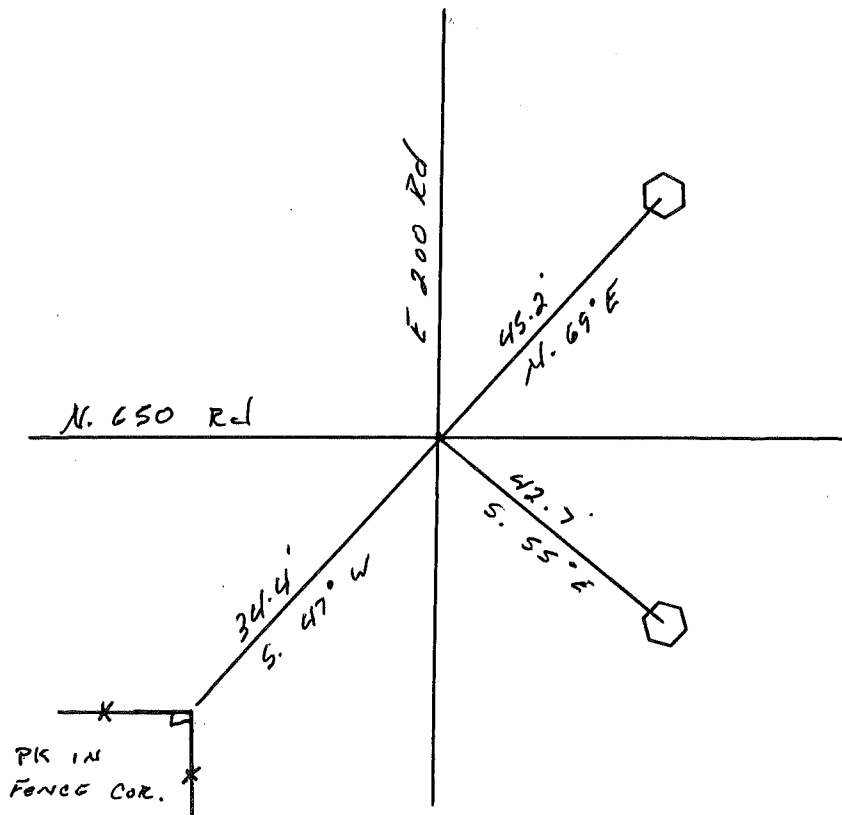
2nd PRINCIPLE MERIDIAN

WARRICK COUNTY SURVEYOR
KARAN HARGRAVE-BARNHILL

INDICATE CORNER REFERENCED



DESCRIBE CORNER REFERENCED



STATE PLANE COORDINATE DATA

INDIANA ZONE: WEST

X _____

Y _____

ESTABLISHED BY:

APPROVED BY

DATE

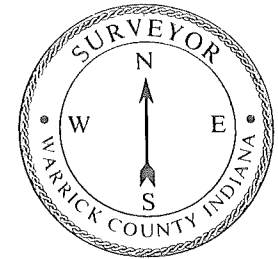
REFERENCED BY:

DATE

Elmo Dockery

Oct 8th 1980

CORNER RECORD
WARRICK COUNTY



DESCRIPTION:

SE CORNER NE 1/4

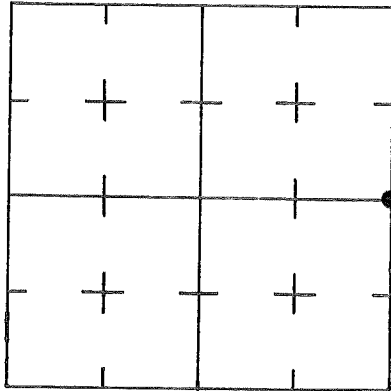
SECTION 32, T. 4 S. R. 7 W.

2nd PRINCIPLE MERIDIAN

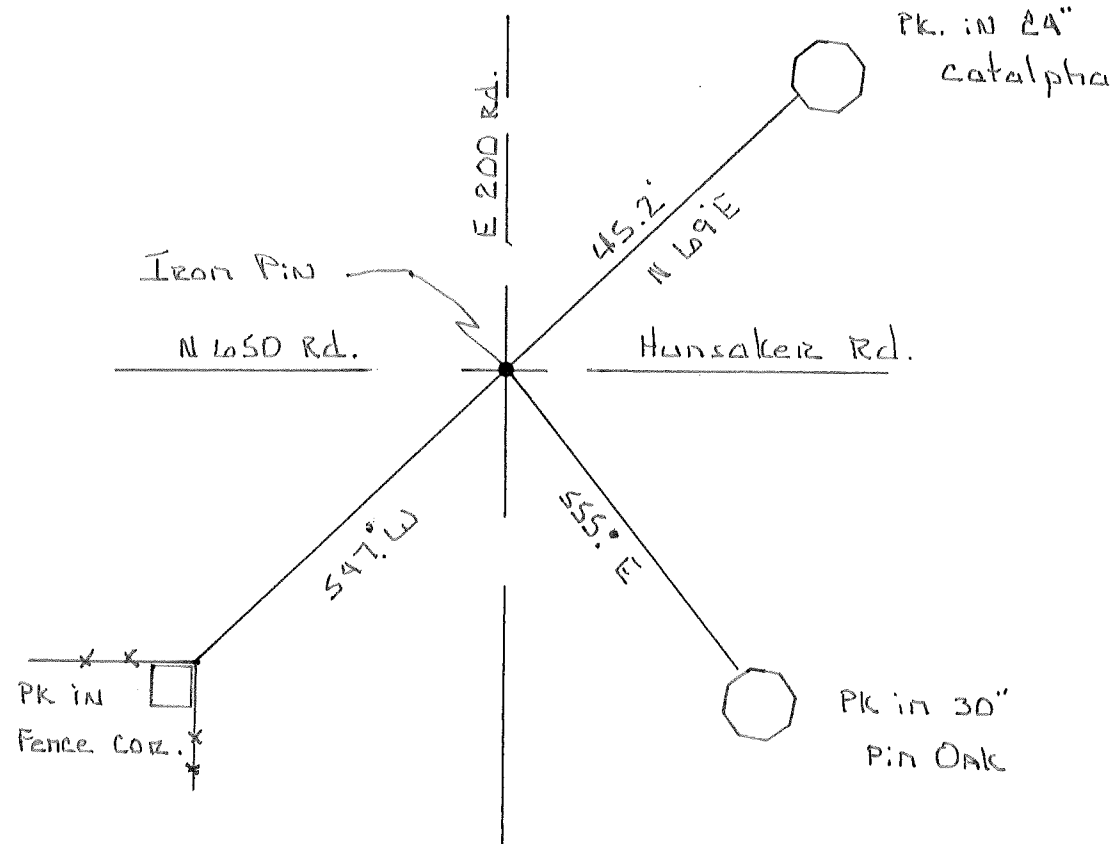
Aligner Court #307

WARRICK COUNTY SURVEYOR
MICHAEL IRVIN

INDICATE CORNER REFERENCED



DESCRIBE CORNER REFERENCED



STATE PLANE COORDINATE DATA

INDIANA ZONE: WEST

X _____

Y _____

ESTABLISHED BY:

APPROVED BY

DATE

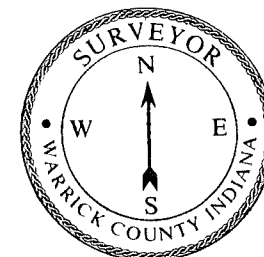
REFERENCED BY:

DATE

Elmo D Dockery

Aug 13, 1980

**CORNER RECORD
WARRICK COUNTY**



DESCRIPTION:

SE CORNER NE 1/4

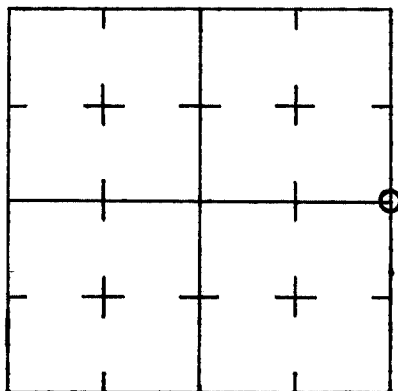
SECTION 32, T. 4 S. R. 7 W.

2nd PRINCIPLE MERIDIAN

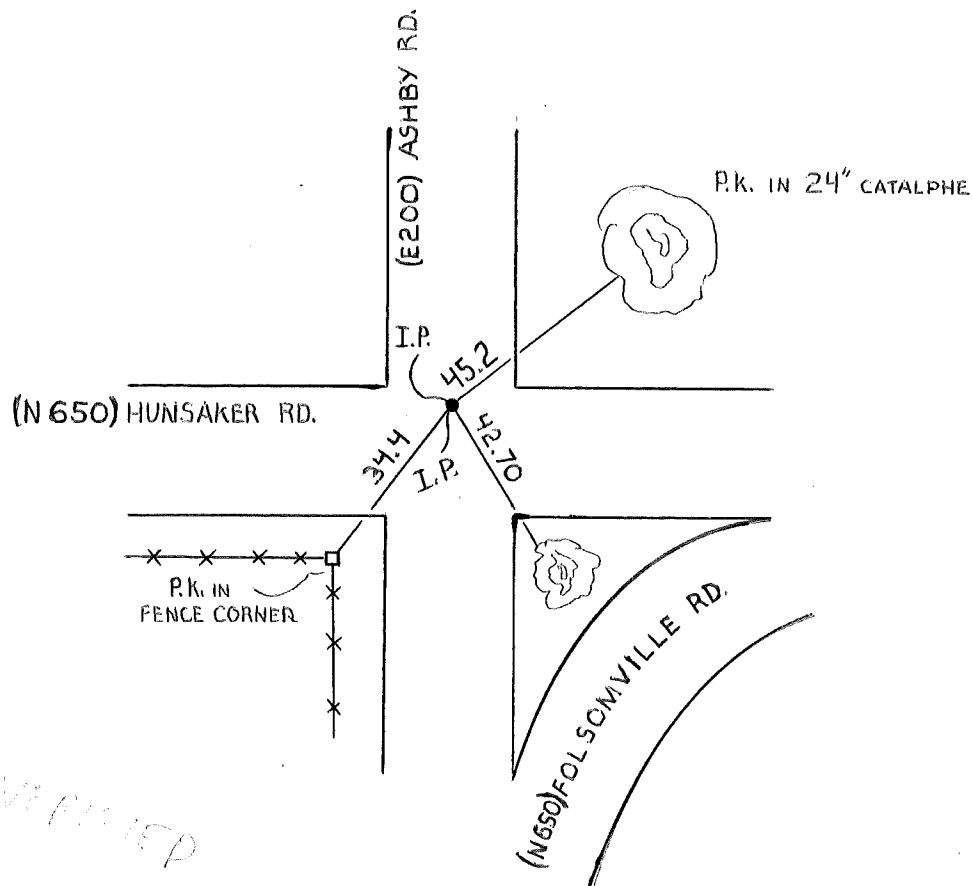
WARRICK COUNTY SURVEYOR

MICHAEL IRVIN

INDICATE CORNER REFERENCED



DESCRIBE CORNER REFERENCED



STATE PLANE COORDINATE DATA

INDIANA ZONE: WEST

X _____

Y _____

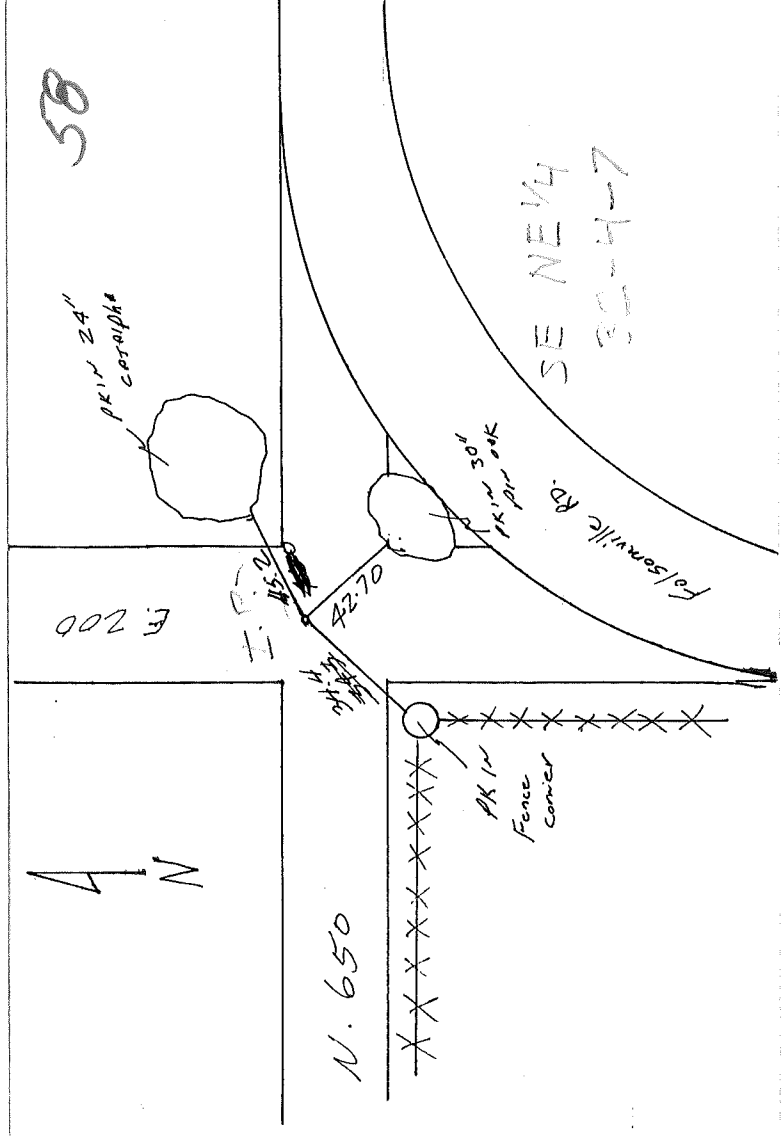
ESTABLISHED BY:

APPROVED BY

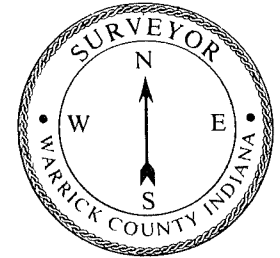
DATE
9-28-73

REFERENCED BY:

DATE



**CORNER RECORD
WARRICK COUNTY**



DESCRIPTION:

SE CORNER NE 1/4

SECTION 32, T. 4 S. R. 7 W.

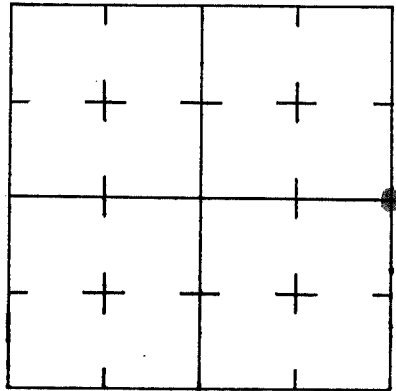
2nd PRINCIPLE MERIDIAN

ALGNER COURT

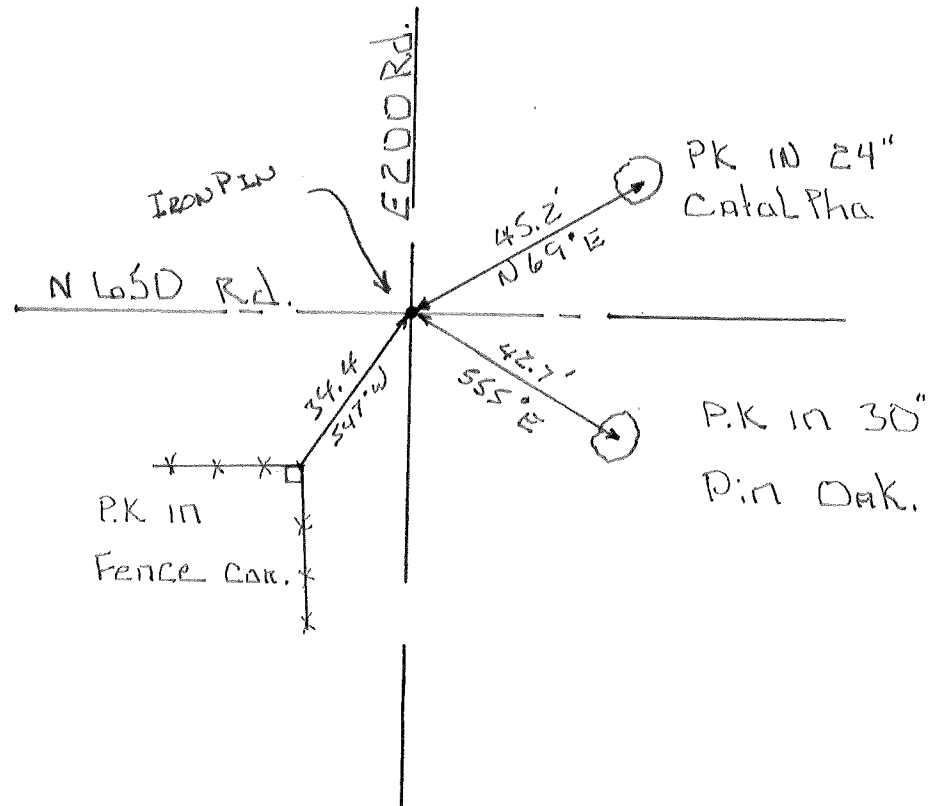
WARRICK COUNTY SURVEYOR

MICHAEL IRVIN

INDICATE CORNER REFERENCED



DESCRIBE CORNER REFERENCED



STATE PLANE COORDINATE DATA

INDIANA ZONE: WEST

X _____

Y _____

ESTABLISHED BY:

APPROVED BY

DATE

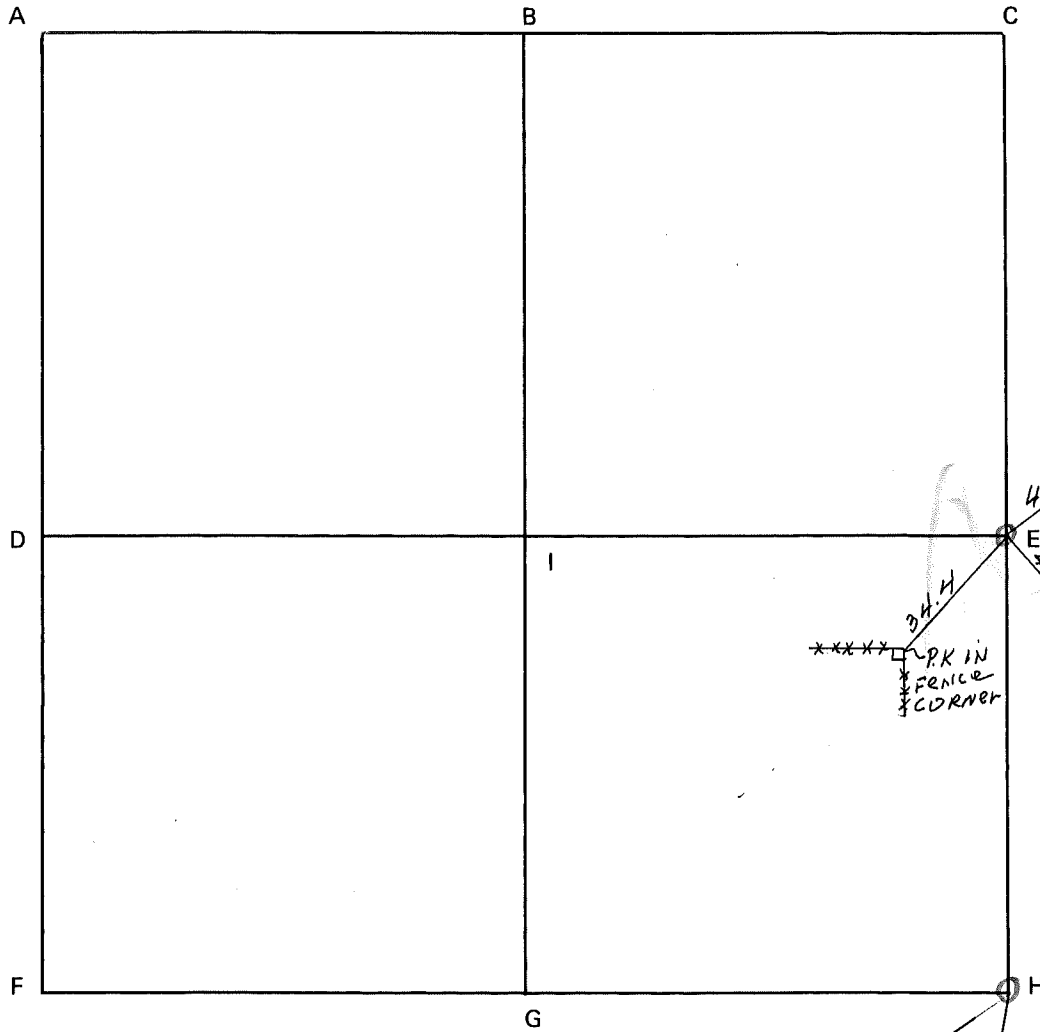
REFERENCED BY:

DATE

Elmo D. Dockery

Aug. 13th 1980.

CORNER CODE SYSTEM
Warrick County



NOTES

P.K. in 24" CATALPA 45.2
P.K. in PIN OAK 42.7
P.K. in FENCE CORNER 34.4
P.K. 4" Birch 21.3
P.K. old fence post 41.7

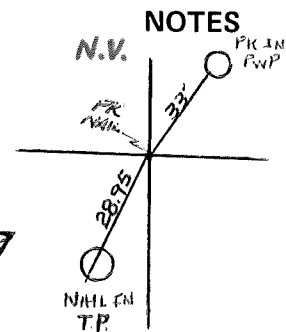
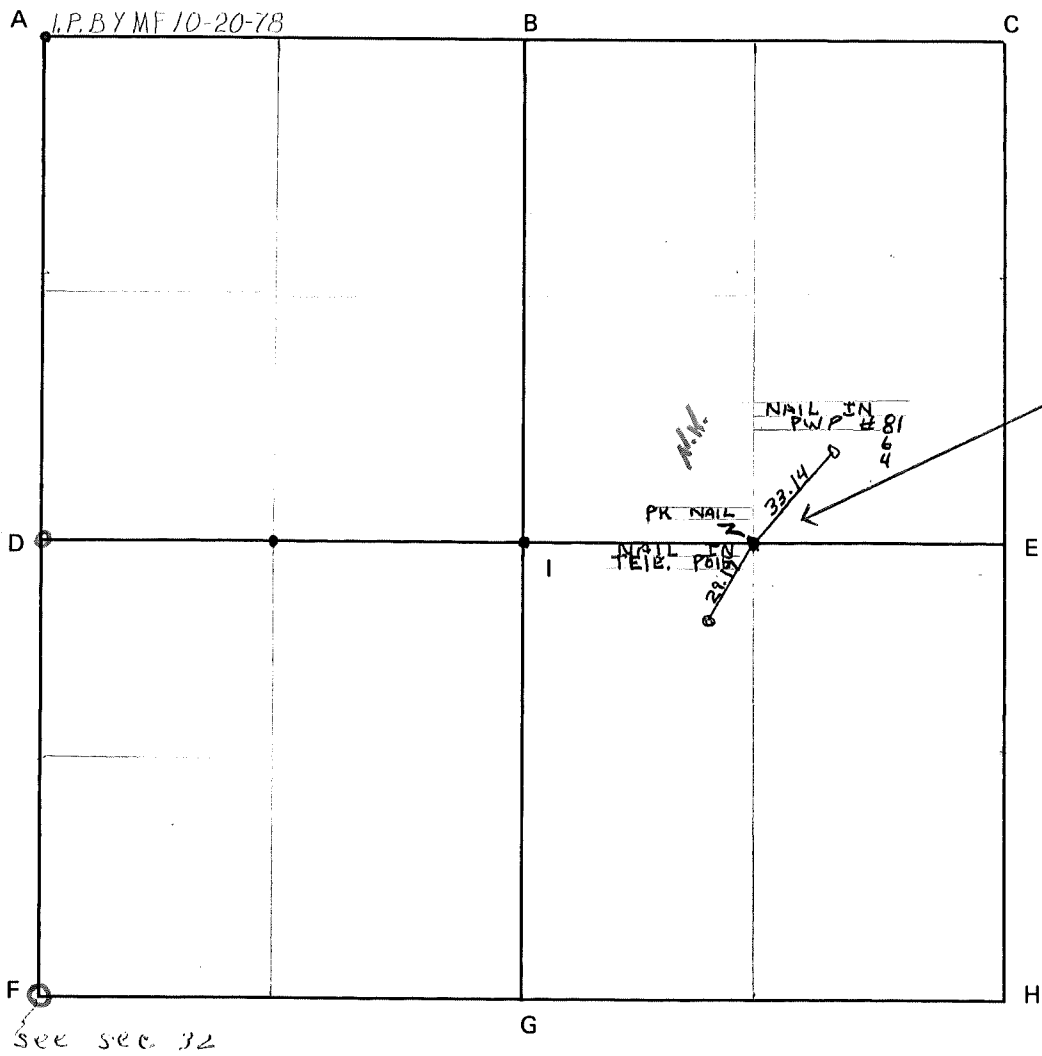
RECORD OF SECTION CORNERS

Warrick County

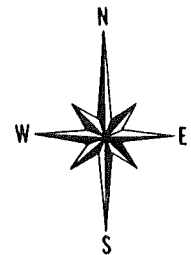
Section 32 Township 4 South Range 7 West 2nd Principle Meridian

Date	Cor	Location	Description of		Distance from Corner	Bearing from Corner (North Assumed)	Cond	Check By	Remarks
			Monument	Reference					
	A								
	B								
	C								
	D								
7-27-74	E	NE cor SE $\frac{1}{4}$	1" iron pin (6" below road)	1) PK nail 2) PK nail 3) PK nail 4) PK nail	45.2' 42.7' 34.4' 53.7'	N 69° E S 55° E S 47° W N 70° W	fair	GAT	Found in place In 24" catalpha In 30" pin oak In fence corner In 18" pin oak
	F								
	G								
7-29-74	H	SE cor SE $\frac{1}{4}$	5/8" re- bar (SURVEY MARKER 3' East)	1) PK nail 2) PK nail NOFA	04.7' 08.3'	S 01° W S 43° W	fair	GAT	Found in place In old fence post In 4" birch

CORNER CODE SYSTEM
Warrick County



CORNER RECORD
WARRICK COUNTY



DESCRIPTION:

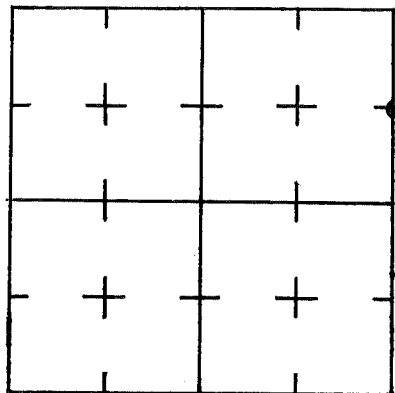
SE CORNER NE 1/4 NE 1/4

SECTION 34, T. 4 S. R. 7 W.

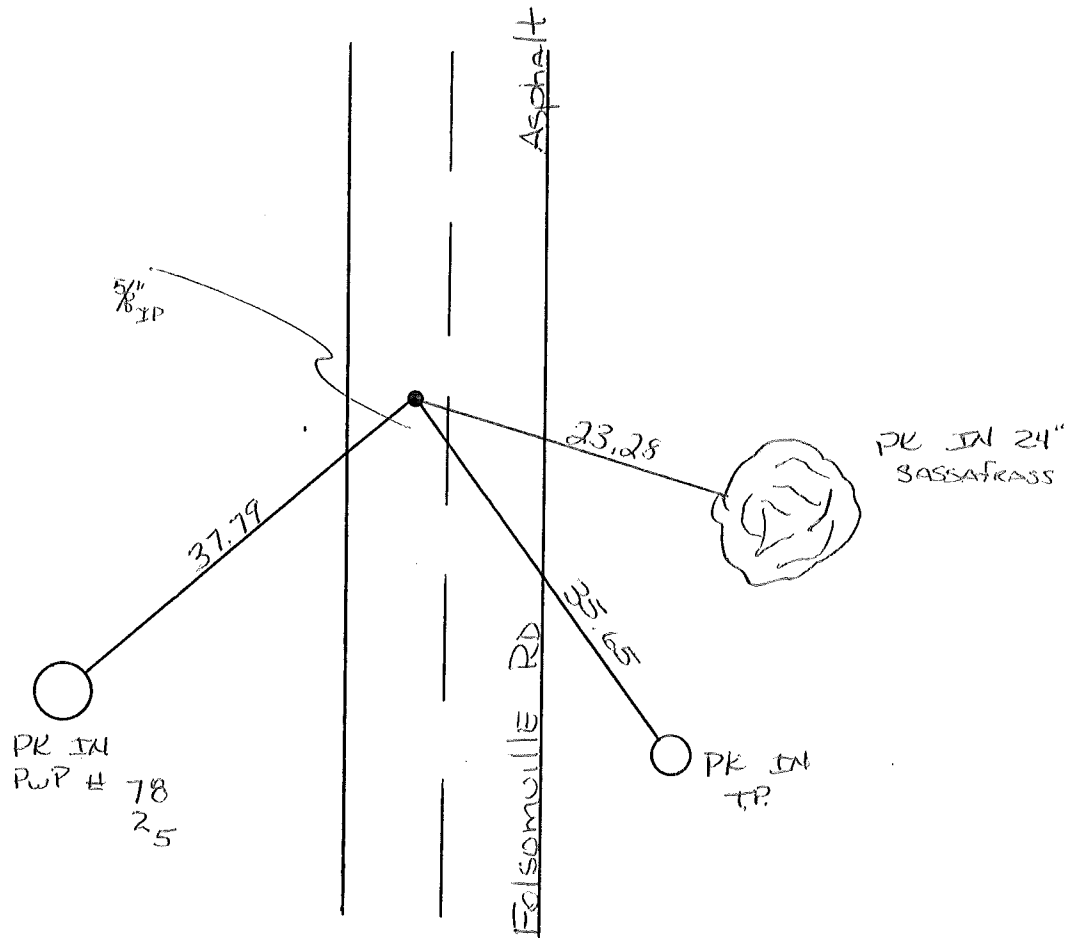
2nd PRINCIPAL MERIDIAN

WARRICK COUNTY SURVEYOR
MICHAEL F. FELDBUSCH, L.S.

INDICATE CORNER REFERENCED



DESCRIBE CORNER REFERENCED



STATE PLANE COORDINATE DATA

INDIANA ZONE: WEST

X _____

Y _____

ESTABLISHED BY:

APPROVED BY M.F. L.S.
SET

DATE

REFERENCED BY:

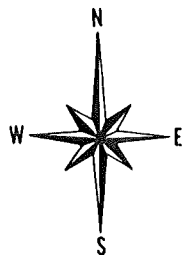
Lang Beck

DATE

1-18-84

(1)

**CORNER RECORD
WARRICK COUNTY**



DESCRIPTION:

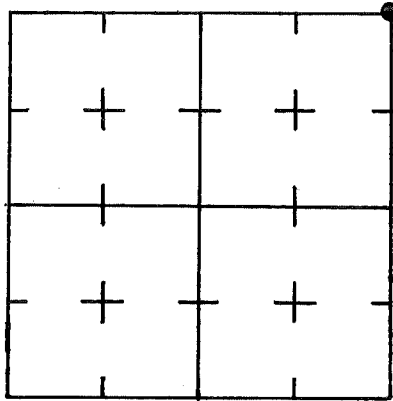
NE CORNER NE 1/4 NE 1/4

SECTION 34, T. 4 S. R. 7 W.

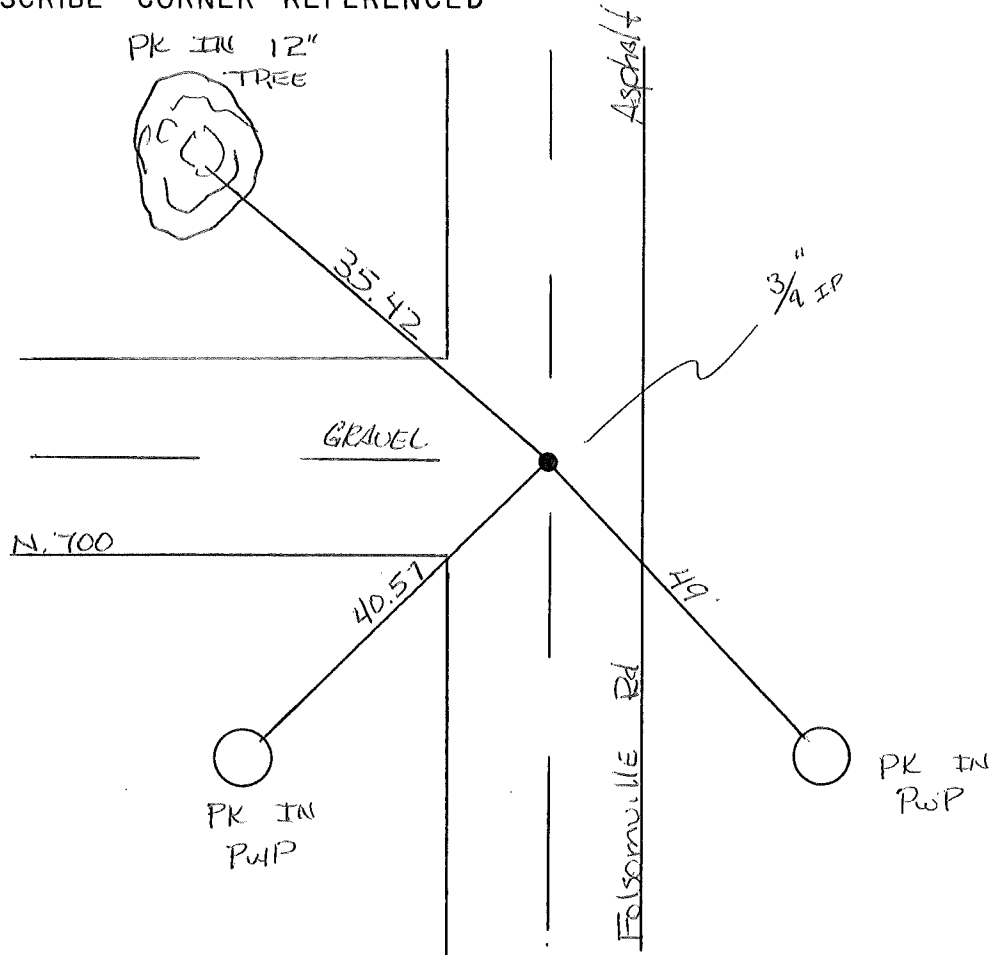
2nd PRINCIPAL MERIDIAN

**WARRICK COUNTY SURVEYOR
MICHAEL F. FELDBUSCH, L.S.**

INDICATE CORNER REFERENCED



DESCRIBE CORNER REFERENCED



STATE PLANE COORDINATE DATA

INDIANA ZONE: WEST

X _____

Y _____

ESTABLISHED BY:

APPROVED BY M.F. L.S.

DATE

REFERENCED BY:

Gay Beck

DATE

1-18-84

CORNER RECORD
WARRICK COUNTY

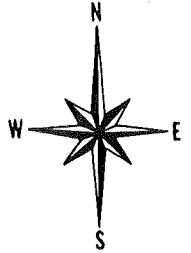
DESCRIPTION:

NW CORNER NE 1/4 NE 1/4

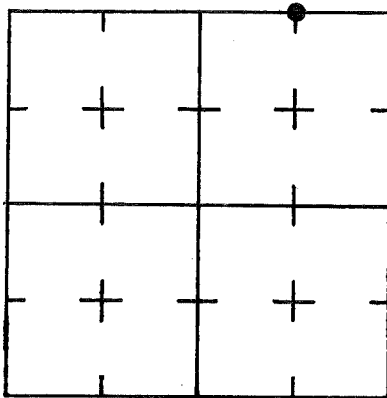
SECTION 34, T. 4 S. R. 7 W.

2nd PRINCIPAL MERIDIAN

WARRICK COUNTY SURVEYOR
MICHAEL F. FELDBUSCH, L.S.



INDICATE CORNER REFERENCED



DESCRIBE CORNER REFERENCED

P.K. IN
F.W.P.



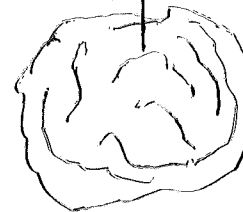
27.75

N. 700

GRAVEL

22.53

5/8 IP
7' S OF CL
OF Rd.



P.K. IN 18"
SASSAFRASS

STATE PLANE COORDINATE DATA

INDIANA ZONE: WEST

X _____

Y _____

ESTABLISHED BY:

APPROVED BY
SET BY M.F. LS 0459

DATE

REFERENCED BY:

Ray Beck

DATE

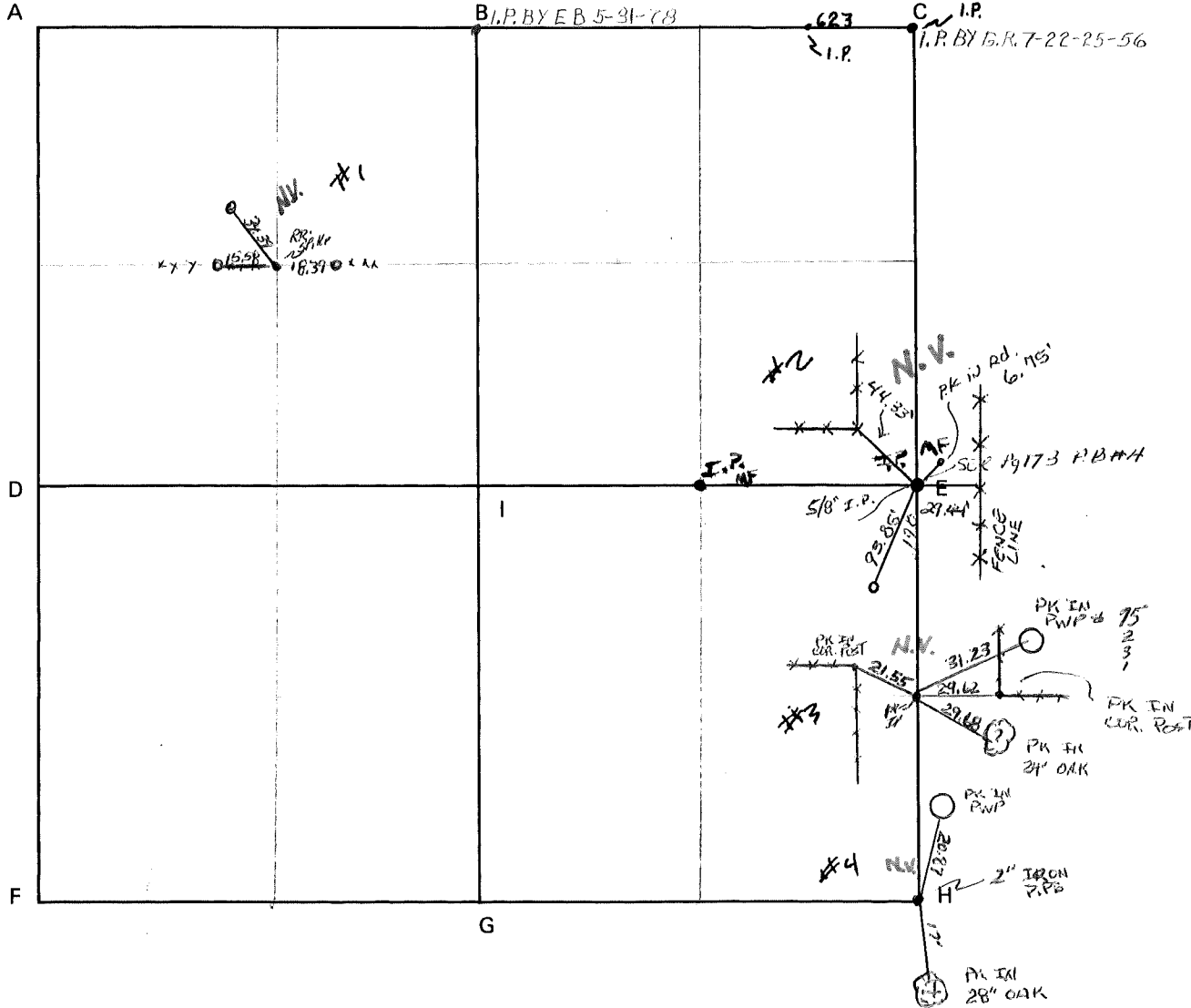
1-18-59

CORNER CODE SYSTEM
Warrick County

NOTES

Morris R. Jacobi
Pt. NE $\frac{1}{4}$ SE $\frac{1}{4}$

PB 4 PG 173



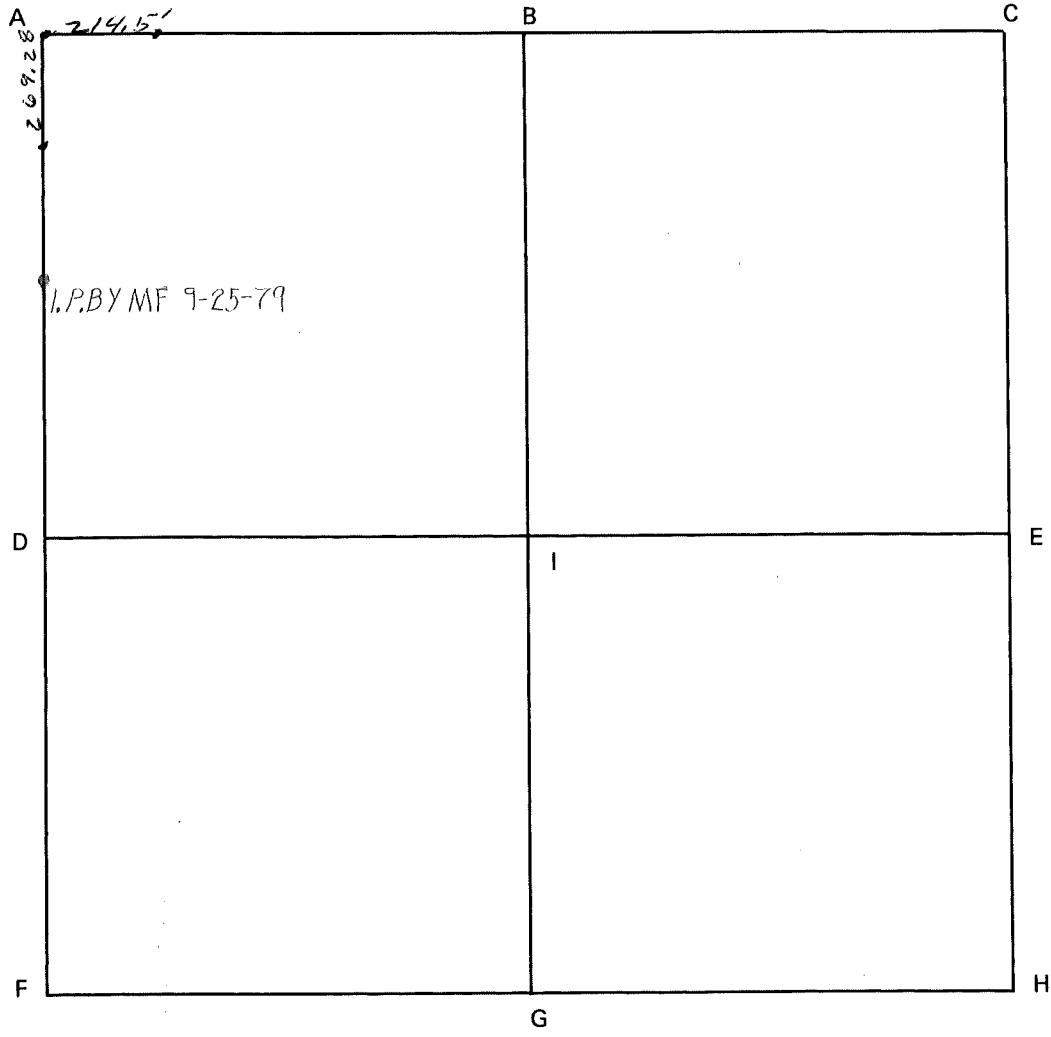
RECORD OF SECTION CORNERS

Warrick County

tion 34 Township 4 South Range 7 West 2nd Principle Meridian _____

Date	Cor	Location	Description of		Distance from Corner	Bearing from Corner (North Assumed)	Cond	Check By	Remarks
			Monument	Reference					
5/25/56	C		iron pin						George Reynolds

CORNER CODE SYSTEM
Warrick County

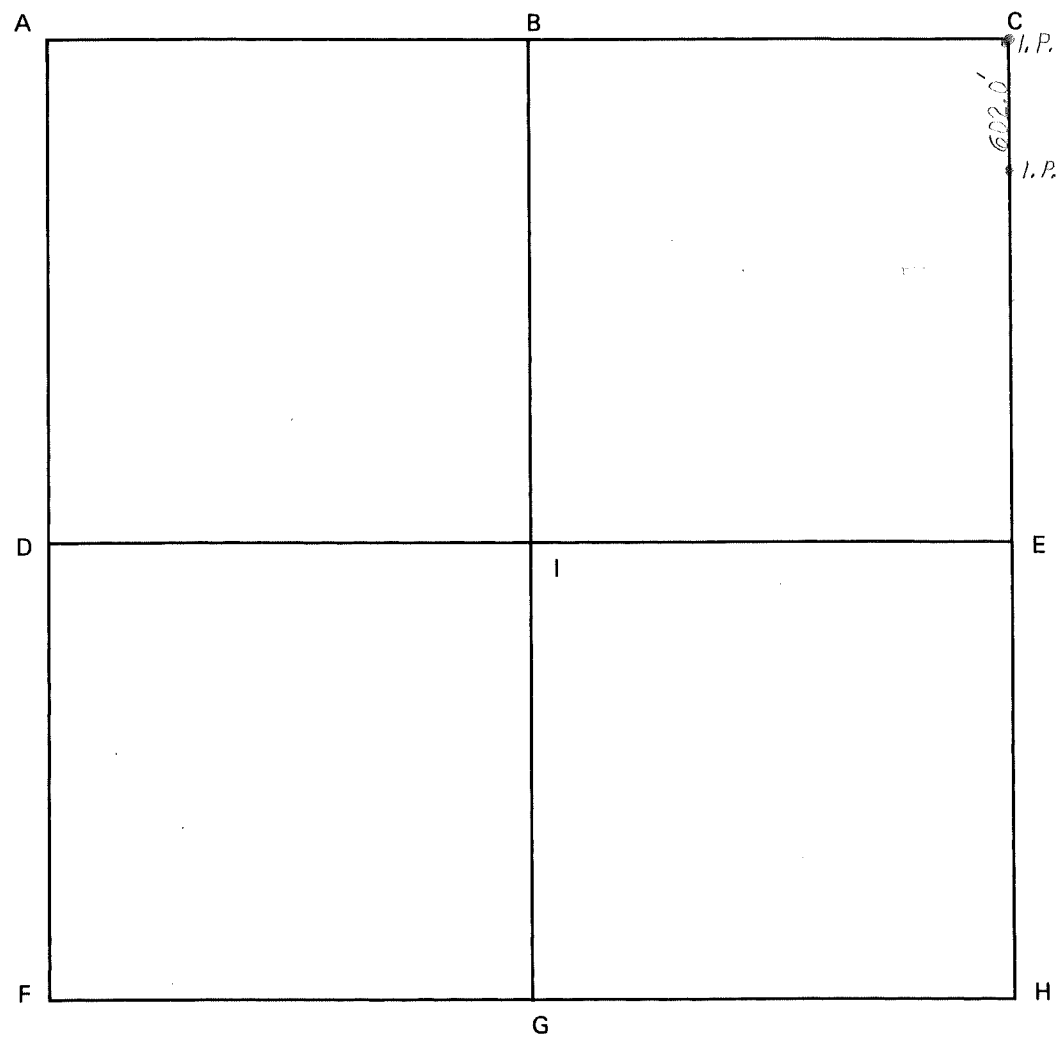


NOTES

Folsomville Cemetary
Pt. NW $\frac{1}{4}$ SW $\frac{1}{4}$

PB 1 PG 116

CORNER CODE SYSTEM
Warrick County



NOTES

